

# Sheboygan River: Area of Concern to Area in Recovery

Mike Vandersteen

Mayor

City of Sheboygan, WI

# What is an AOC?



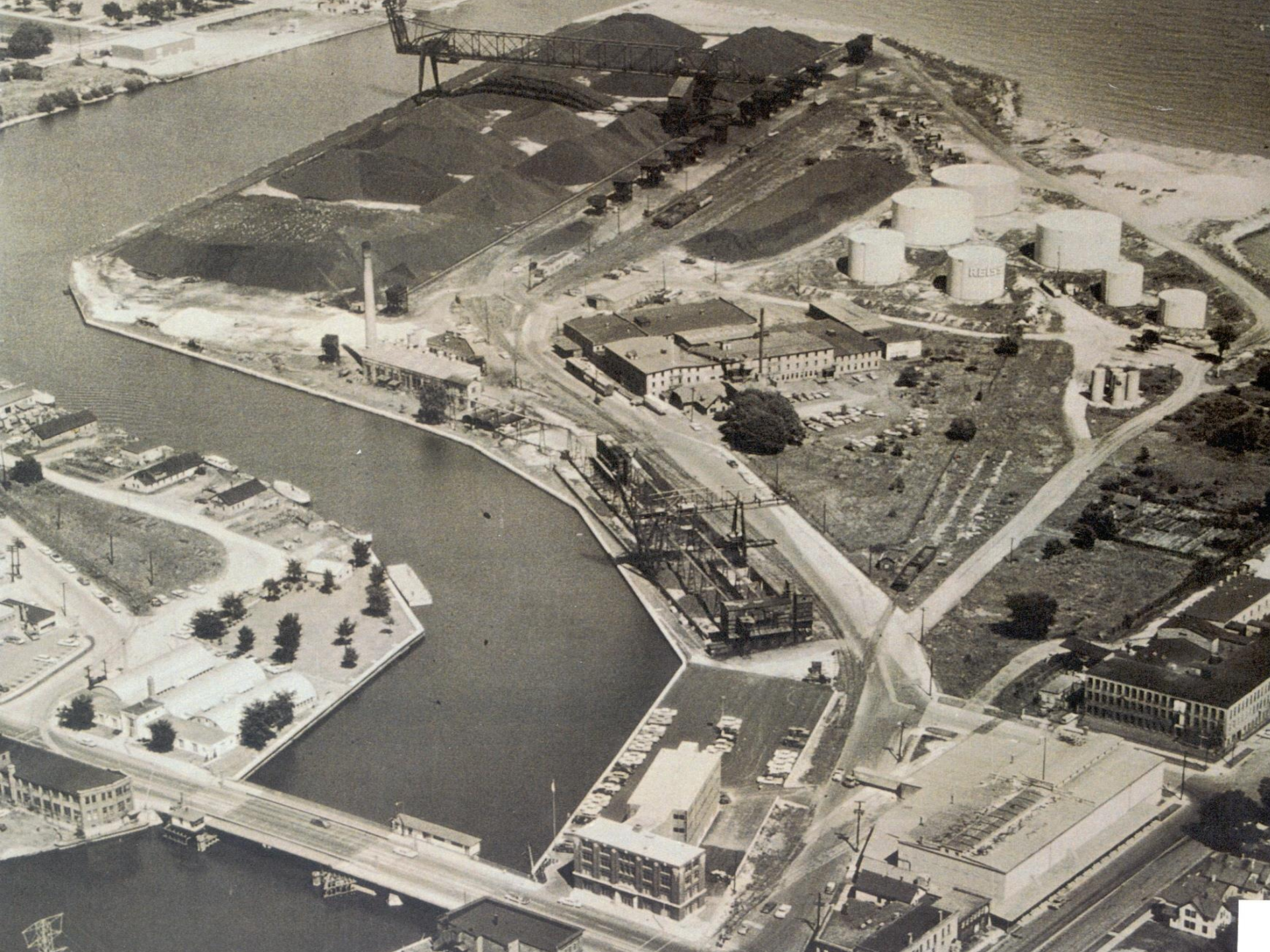
## Why is the river an AOC?





**ASSUMED 1930 - 1950**









Photos by Stacy Hron, Deb Beyer, Scott Horzen



# Restoring an AOC

## Dredging



## Habitat Restoration



## Monitoring/ Assessment



Photos by Stacy Hron, WDNR



# You need a lot of people!



Photos by Deb Beyer





# Monitoring and Assessment



Photos by Stacy Hron, WDNR



# Monitoring Projects

## Pre/During

- Waterfowl Tissue (Advisory)
- Fish Tumors
- Fish Tissue (Advisory)
- Plankton & Benthos
- Tree Swallows
- Fish Community
- Macroinvertebrates
- Aquatic Habitat
- Herptiles
- Breeding Birds
- Bats
- Mussels
- Wintering Birds
- Fish-Eating Birds
- Small Mammals and Mink
- Natural Community/Rare Plant/Invasive Plant

## Post

- Waterfowl Tissue (Advisory)
- Fish Tissue (Advisory)
- Plankton & Benthos
- Tree Swallows
- Mink
- Fish Community
- Macroinvertebrates
- Aquatic Habitat
- Passive Samplers





# Sheboygan River Dredging Projects

Upstream of 14<sup>th</sup> Street Bridge

Some Superfund (PCB) & Legacy Dredging

Between 14<sup>th</sup> St. & Penn Ave. Bridges

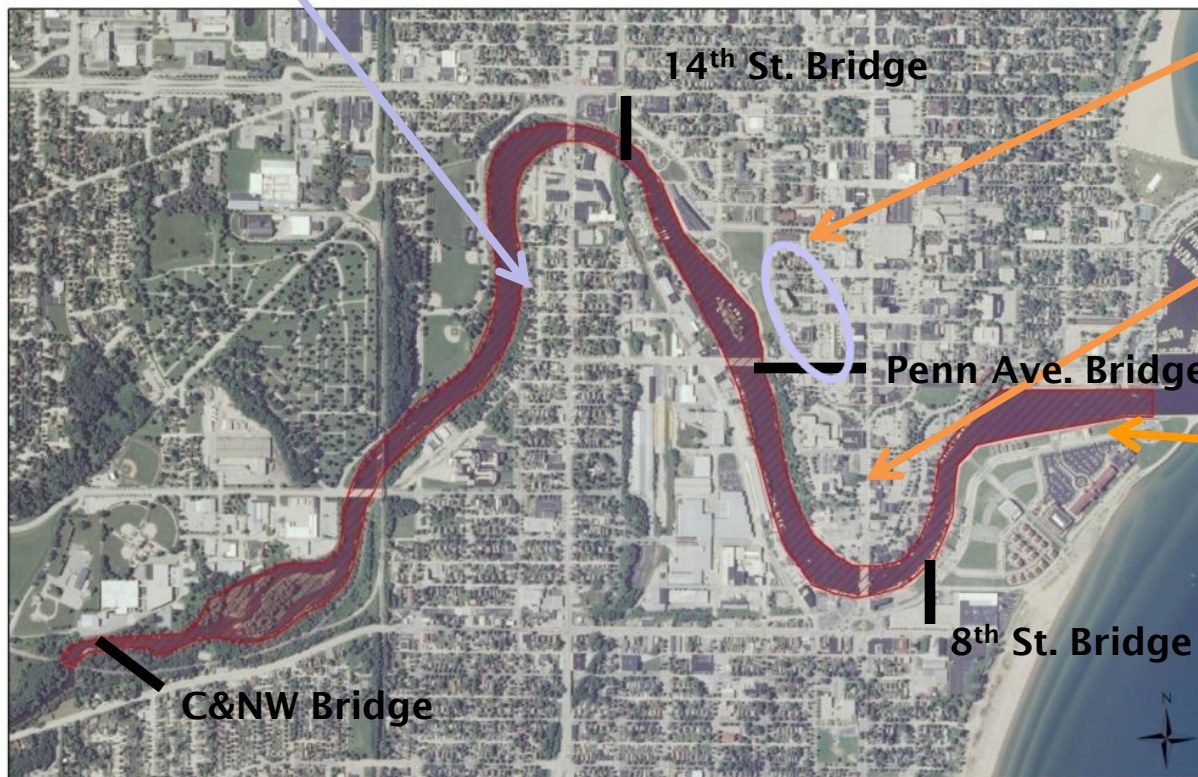
Legacy Dredging & Camp Marina Superfund

Between Penn  
Ave. & 8<sup>th</sup> St.  
Bridges

Main Area of  
Superfund & Legacy  
Projects

Downstream of 8<sup>th</sup>  
Street Bridge

Navigational Dredging  
(No Superfund or Legacy)



Sheboygan River Area of Concern

 Lower River & Inner Harbor (Legacy Act Activities)

0 0.25 0.5 Miles

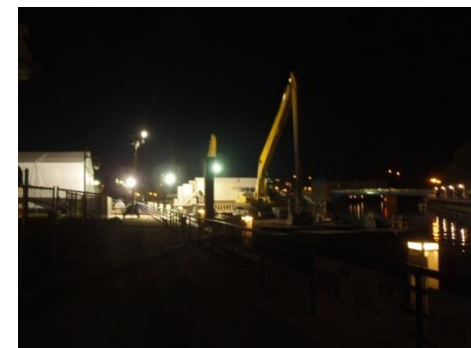






Photo from City of Sheboygan







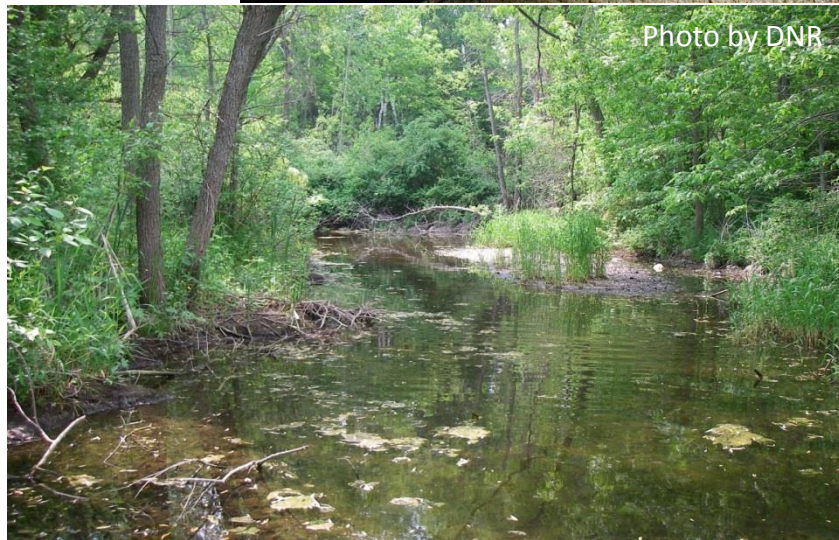
# Habitat Restoration

- 7 projects implemented by DNR and partners
- Projects vetted by Fish & Wildlife TAC
- Miles of river corridor & acres of habitat restored
- Vetting to completion in under 2 years!





# Schuchardt Property Conservation Planning





# In-Stream Habitat Improvements

- 2 sites in the upper river (Sheboygan Falls and Kohler)
- Assessed benthic habitat of entire 14 mile stretch of river
- Added boulder habitat in river and woody debris along shorelines



Photos by Stacy Hron, WDNR



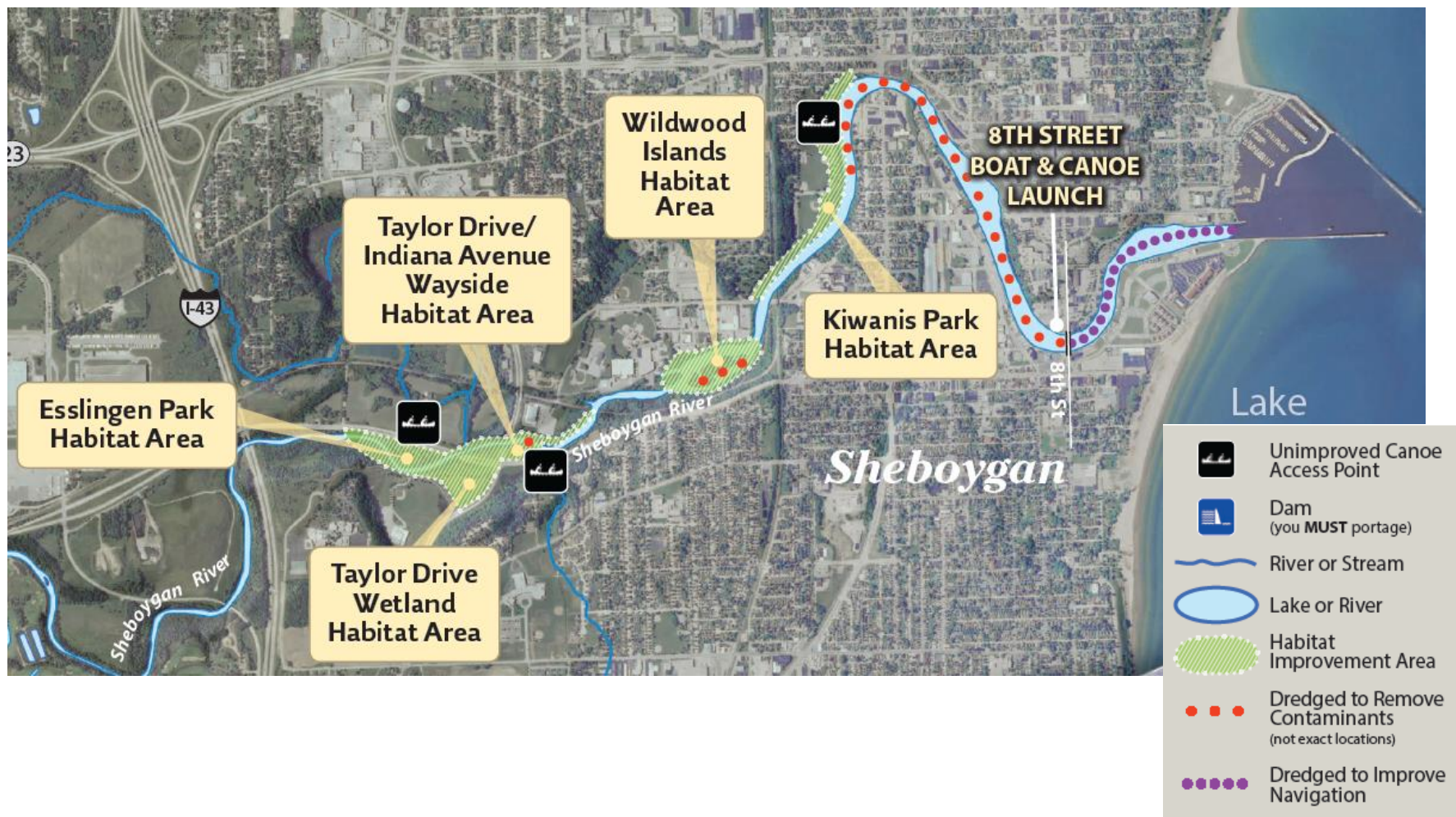
# Targeted Invasive Species Control

- 58 sites along the 14 mile long AOC Corridor
- Japanese Knotweed, Phragmites, Garlic Mustard, Buckthorn





# The “Big Projects”





# Kiwanis Park Shoreline Restoration



Photos by Stacy Hron, WDNR





# Kiwanis Park Shoreline Restoration



Photo by Stacy Hron, WDNR



# Kiwanis Park Shoreline Restoration



Photo by Deb Beyer, UWEX



# Kiwanis Park Shoreline Restoration



Photo by Deb Beyer, UWEX





# Wildwood Island Area Restoration





# Wildwood Island Area Restoration





# Wildwood Island Area Restoration





# Wildwood Island Area Restoration



Photos by Deb Beyer, UWEX







# Wildwood Island Area Restoration





# Taylor Drive & Indiana Avenue Area Wetland Restoration





# Taylor Drive & Indiana Avenue Area Wetland Restoration



Photo by Stacy Hron, WDNR



# Taylor Drive & Indiana Avenue Area Wetland Restoration



Photos by Deb Beyer, UWEX



# Taylor Drive & Indiana Avenue Area Wetland Restoration



Photos by Deb Beyer, UWEX



# Roy Sebald Sheboygan River Natural Area



Photo by Stacy Hron, WDNR



# Roy Sebald Sheboygan River Natural Area



Photo by Deb Beyer, UWEX



# Roy Sebald Sheboygan River Natural Area





# Esslingen Park





# Esslingen Park



Photo by SEH



# Long Term Gains...

- Redevelopment Opportunities of underutilized property & enhancement of existing properties.
  - Allows for reinvestment of the riverfront with up to 10 feet of depth for development docking from 8<sup>th</sup> Street to 14<sup>th</sup> Street Bridge.
  - Enhancement of South Pier District.
  - Indiana Avenue Revitalization Project
  - Lower Downtown 8<sup>th</sup> Street Revitalization



# Overview of Redevelopment Opportunities





# Long Term Gains

- Allow for additional cruise ships, mega yachts, marine boat shows, tall ships, etc like:

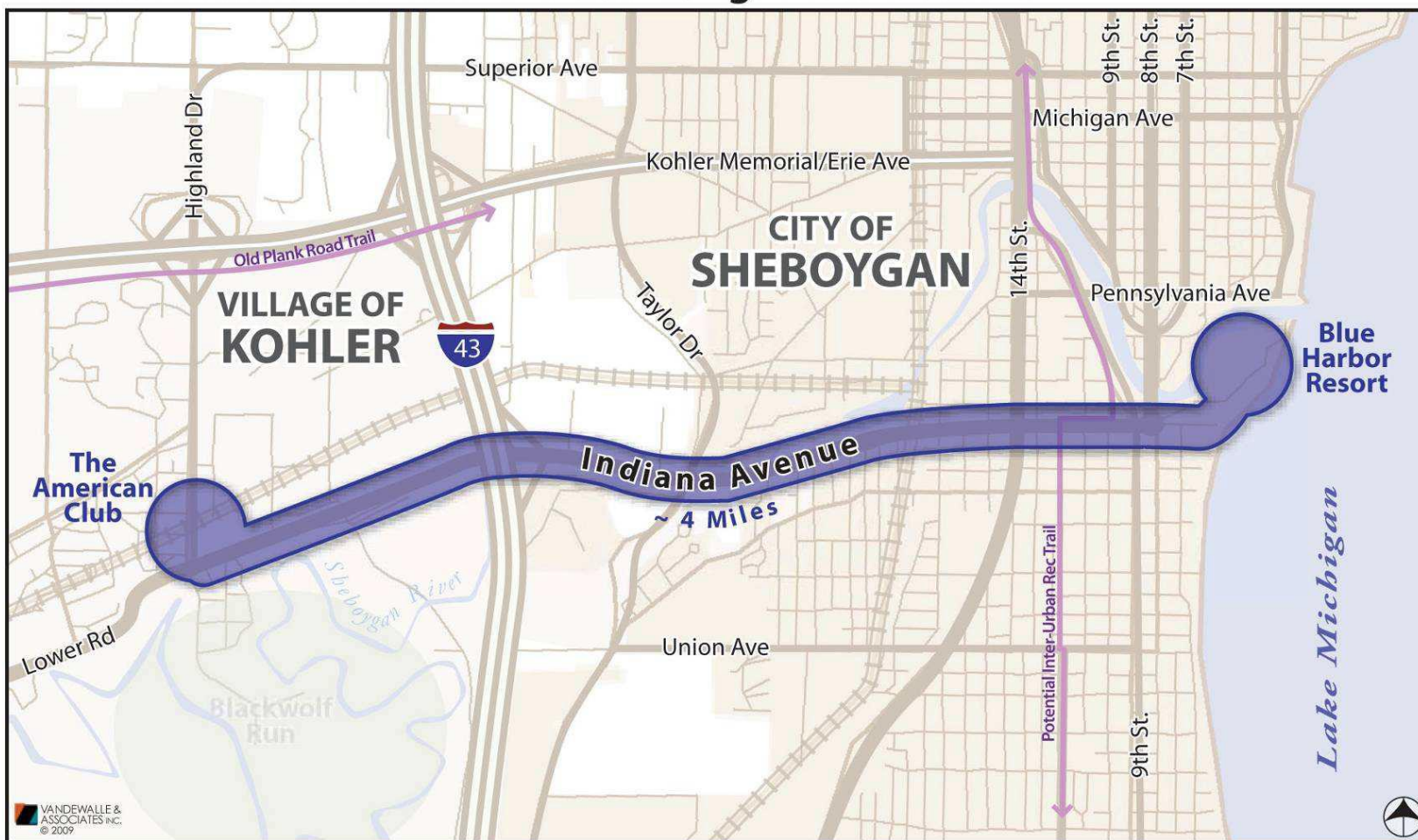




# Long Term Gains...

## Indiana Avenue Revitalization

### Indiana Avenue - Kohler to Lake Michigan Connection





# Long Term Gains

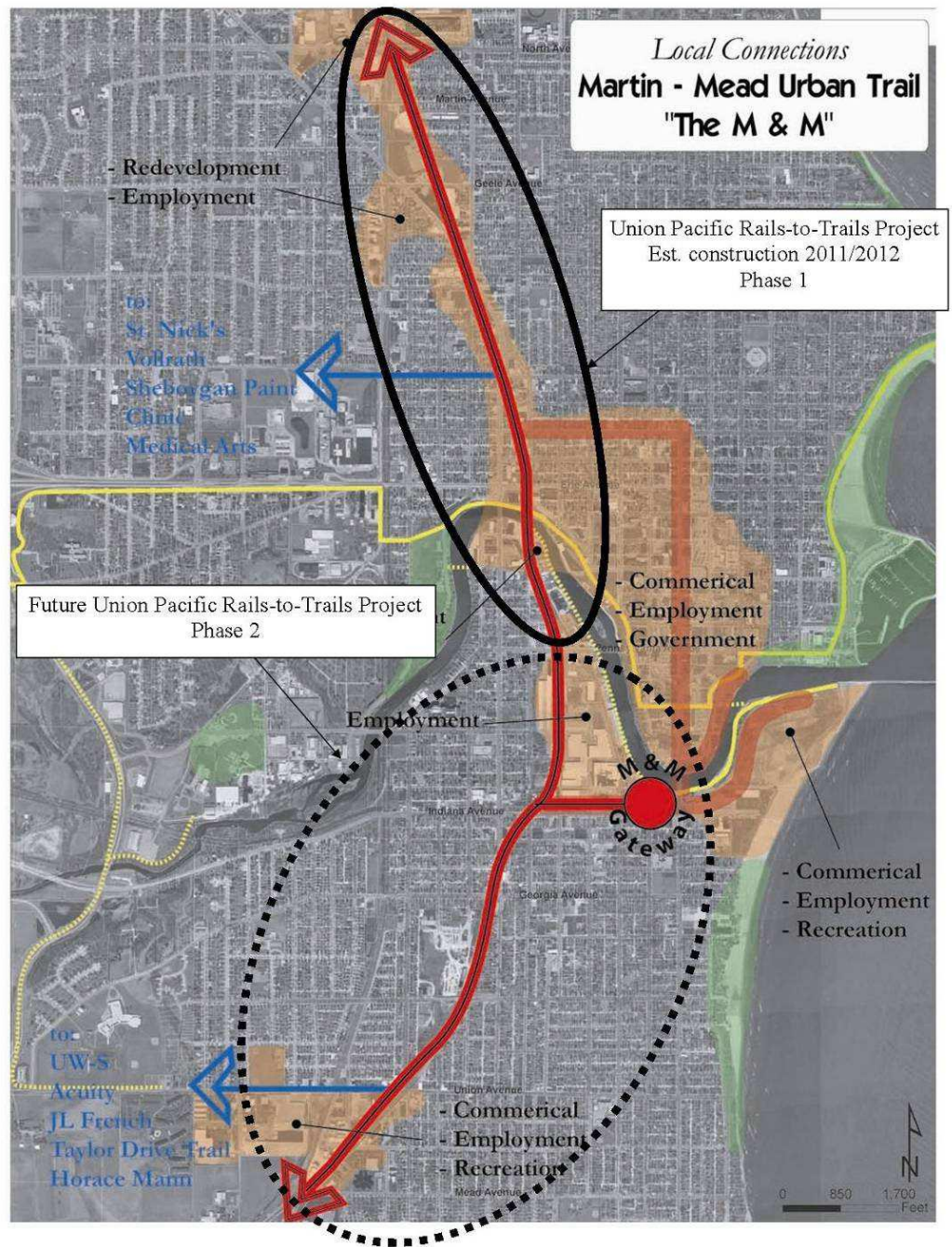
- Waterfront: current local economic benefit of \$8.7M.... Hope to increase this.
- With current water levels, one of the few Great Lakes Ports with usable channels (Now 11-15 foot depths)/marinas. Est. 80% of Great Lakes Harbors unusable.
- Changes the perception of *“its got the perception of being dirty, I wouldn’t go swimming in it as you might glow!”*, stated a local resident.
- Potential for New Tax Base.. New jobs... new uses for the river and surrounding areas.
- Creation of a wayfinding signage system to direct people from the Interstate to key economic corridors.



# Long Term Gains...

## Expansion of Bicycle/Trail Infrastructure

### Redevelopment Opportunities along the trail.





# Funding Sources

GLRI	\$6,400,000
Legacy	\$20,000,000
Superfund & Techumseh	\$30,000,000
WP&S	\$10,000,000
City	\$300,000
County	\$300,000
DNR & DOT	\$10,000,000





Mike Vandersteen  
Mayor.vandersteen@sheboyganwi.gov