

CLIMATE-READY GREAT LAKES CITIES

*Preparing for the future with
NOAA and GLSLCI*

Alexandra Brewer and Samuel Molnar,
University of Michigan

Climate Ready Cities Project Team: Andrea Kraus, Wufan
Jia, Pearl Zeng and Lauren White

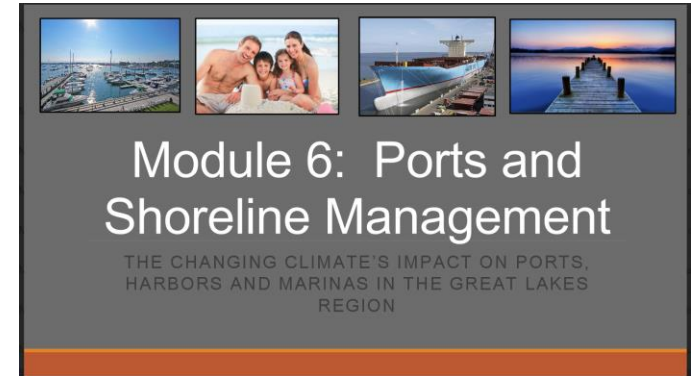
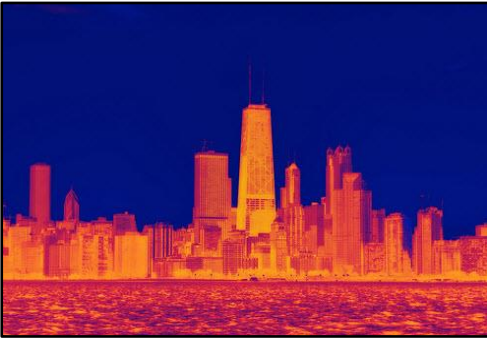
WHY ADAPT?

“Avoid the unmanageable,
manage the unavoidable”

-ROSINA BIERBAUM

Climate Ready Cities Project Objectives

1. Evaluate adaptation **challenges** facing Great Lakes cities.
2. Examine barriers, opportunities and **best practices**.
3. Offer decision-relevant, on-the-ground **examples**.
4. Create a municipal-level climate adaptation **toolbox**.



Partner Cities

1. TRAVERSE CITY, MI
2. MILWAUKEE, WI
3. EVANSTON, IL
4. NIAGARA REGION, ON
5. GODERICH, ON





MAINSTREAMING AN “ADAPTATION MINDSET”

WHY THIS “ADAPTATION MINDSET?”

| A response to the very complex
| nature of adaptation!

Adaptation lacks:

- | • metrics
- | • generalizability

REQUIREMENTS FOR AN ADAPTATION MINDSET

- awareness of impacts
- awareness of vulnerable operations
- capacity to incorporate adaptation into efforts

Examples from Evanston, IL

“For me, it’s looking at things that are relevant to who I work with.”

-Christina Ferraro, Assistant Director, Evanston Community Services

- #1. Consider climate change in day-to-day operations and efforts.
- #2. Look for common-sense actions now that have benefits in the future
- #3. Don’t go it alone – know your network
- #4. Utilize existing sustainability frameworks





TARGETING ADAPTATION INVESTMENTS

Evaluate Risk and Target Investments



Evaluate Risk and Target Investments

Variation in Vulnerability Across Neighborhoods



Evaluate Risk and Target Investments

**Variation in
Vulnerability Across
Neighborhoods**

**Information-centric
approach guides
smart infrastructure
planning**



Evaluate Risk and Target Investments

**Variation in
Vulnerability Across
Neighborhoods**

**Information-centric
approach guides
smart infrastructure
planning**



Focused Investment =  **Benefits,**  **Risk**

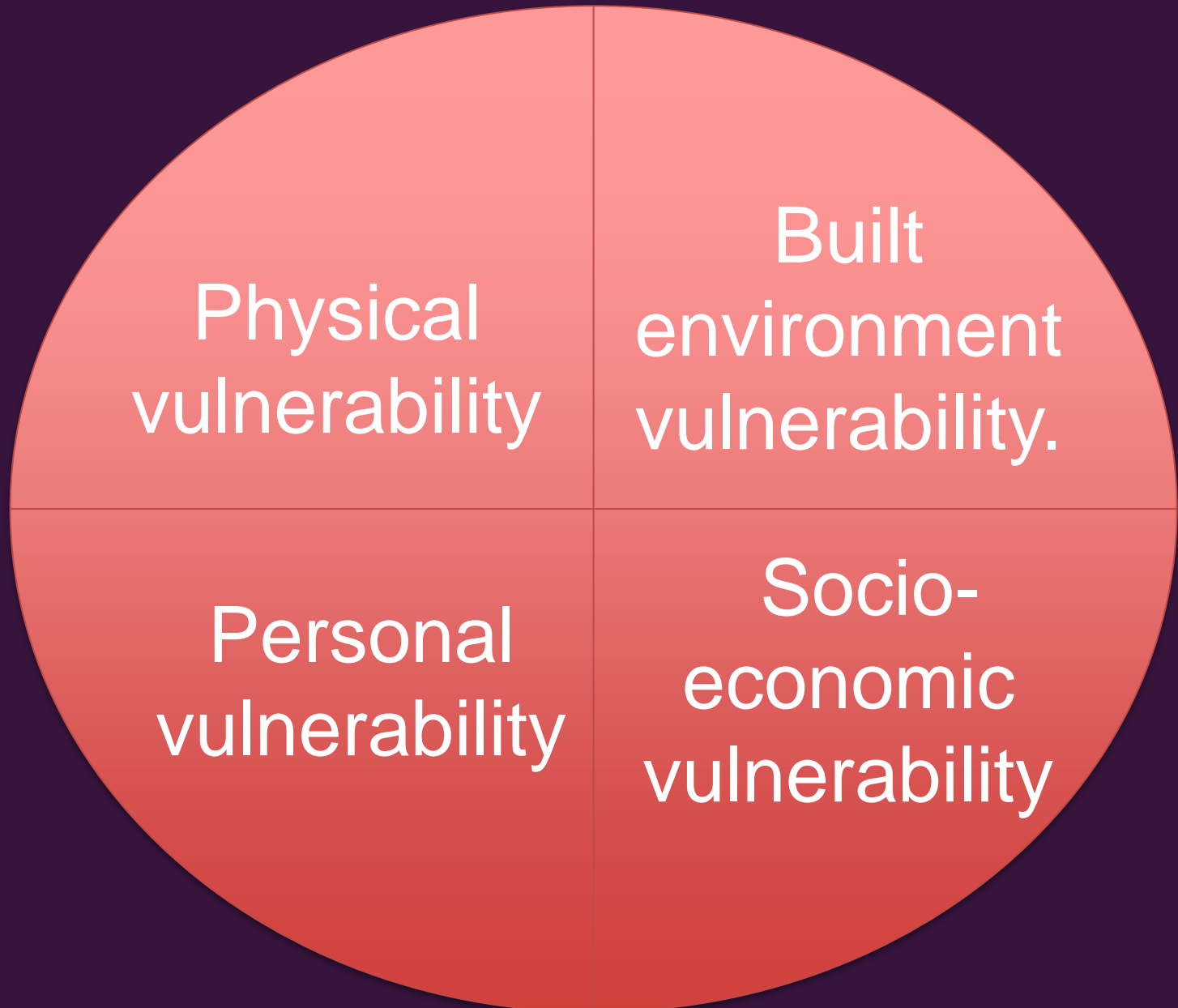
Evaluate Risk and Target Investments

The Climate Impacts Vulnerability Index

1. Customizable and process based.
2. Anchored in GIS technology.
3. Useful for planning future actions, and evaluating previous actions.
4. Human impacts focused

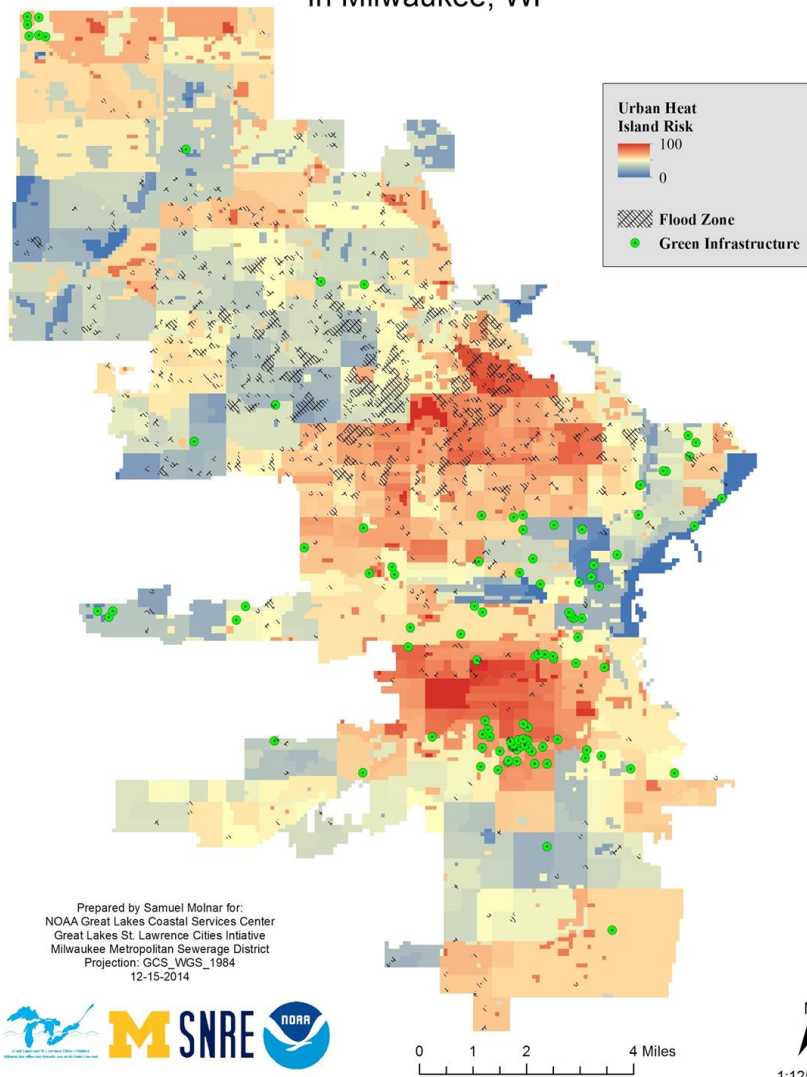


Four Major Vulnerability Facets

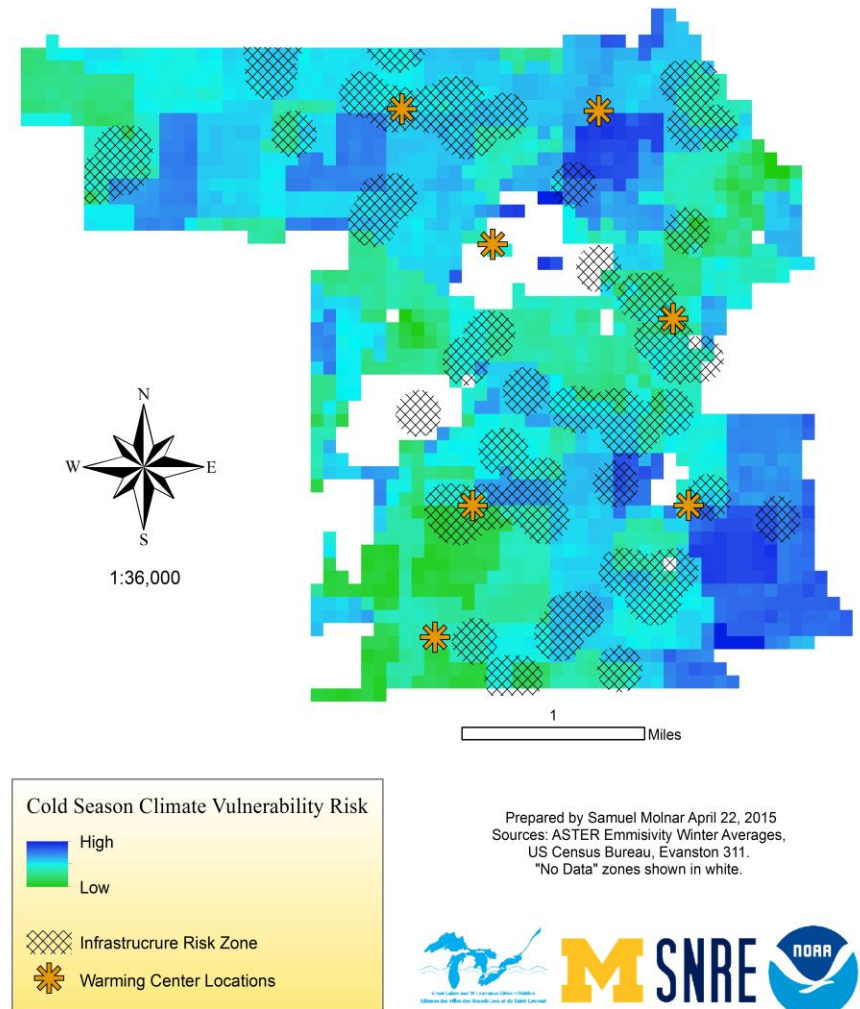


Example CIV Maps

Climate Vulnerability and Green Infrastructure
In Milwaukee, WI



Cold Season Climate Vulnerability in Evanston, IL





LESSONS LEARNED

THE PROBLEM WITH “PRESCRIPTIVE”

Adaptation actions should be unique to each locality, and there is no silver bullet



ADAPTATION IS COMPLEX

...but cities are already good at
complex problem solving

RECOMMENDATIONS

- Leverage **existing** frameworks and knowledge.
- Have a **diversified portfolio** of classical and green engineering
- Work, and communicate, **across departments.**

THANKS TO...

- Nicola Crawhall, Simon Belisle, Stacey Biron, and the GLSLCI
- Heather Stirratt, Jennifer Day, Brent Schleck, and NOAA
- Dr. David Allan and University of Michigan School of Natural Resources and Environment
- The cities of Evanston, IL; Traverse City, MI; Goderich, ON; Milwaukee, WI; and Niagara Region Ontario

THANK YOU!



Alexandra Brewer
abrewe@umich.edu
253-212-6420

Samuel Molnar
smolnar@glc.org
248-701-9218