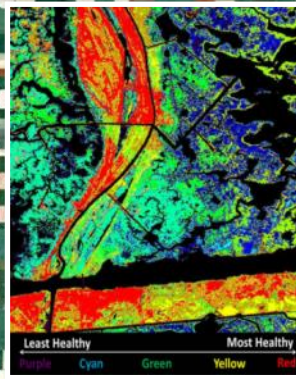
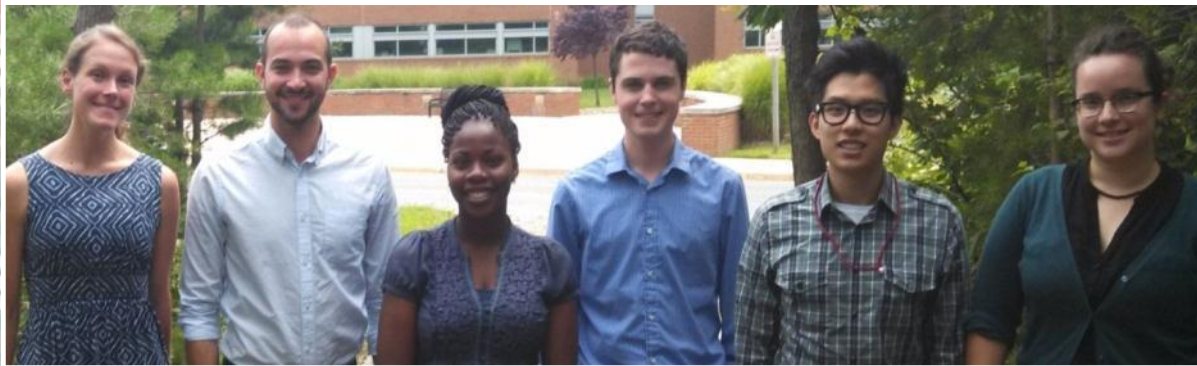




DEVELOP National Program



GLSLCI – 2014 Annual Meeting and Conference
Thunder Bay, Ontario - 19 June 2014

DEVELOP National Program

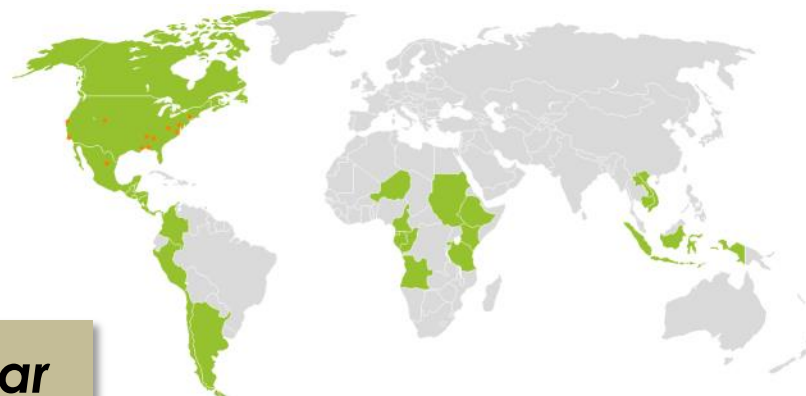
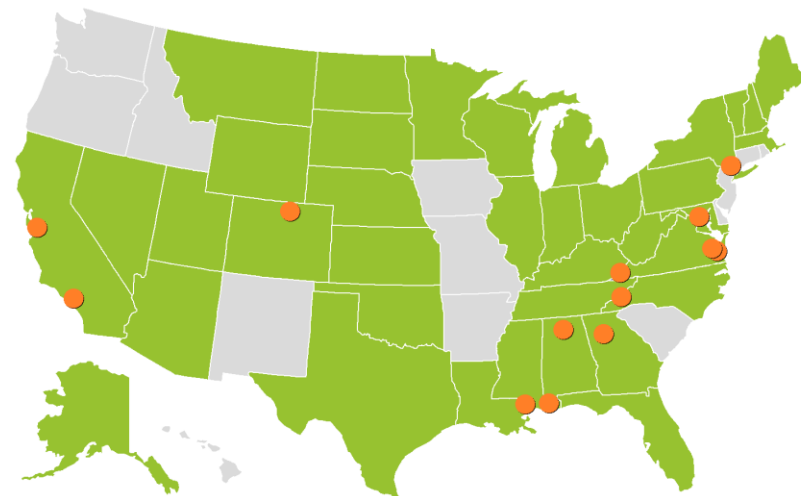


What is DEVELOP?

NASA workforce development program that **collaborates** with **decision makers** to conduct environmental research projects using **NASA Earth observations**



2014 Summer Project Impact



> 350 Participants & 80 Projects Per Year

GLSLCI and DEVELOP partnership facilitates a direct line of communication between decision makers in the Great Lakes region and NASA and other US Federal agency Earth observations and resources

Highlight Projects:

- Extreme Precipitation Event Analysis
- Stormwater Runoff Impacts on Lake Erie
 - Soil Erosion Potential in Duluth



Dr. Kenton Ross (NASA), Dave Ullrich (GLSLCI), and Ande Ehlen (DEVELOP) at 2012 GLSLCI Annual Meeting



Precipitation Analysis



Rainfall for May 28, 2012 in Thunder Bay, Ontario

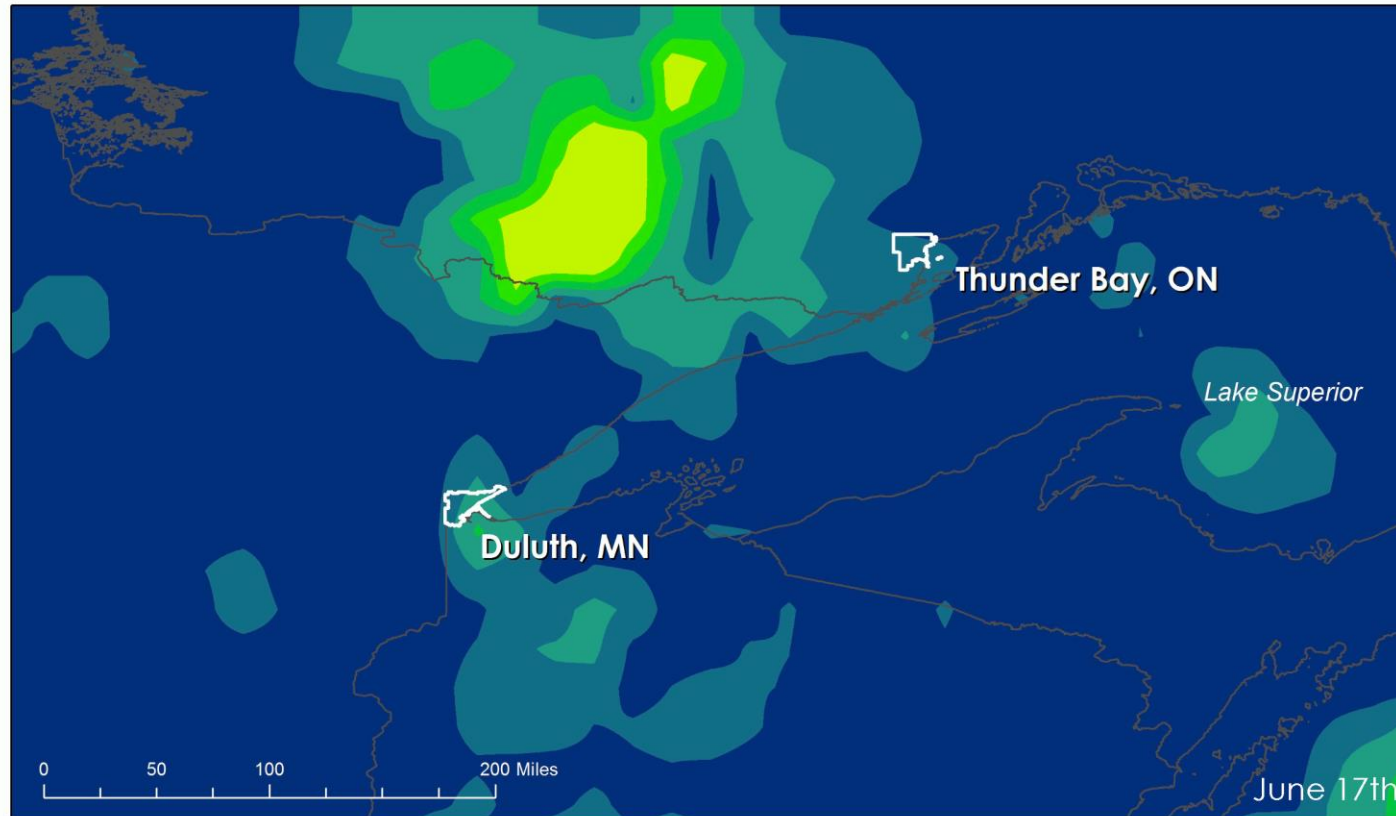


Legend

Precipitation (in mm)

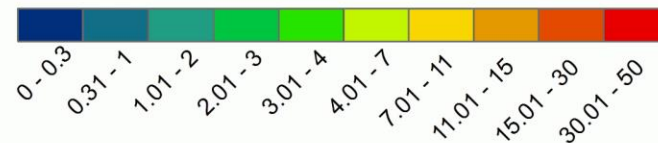


Precipitation Analysis



Rainfall for June 17th through June 20th, 2012

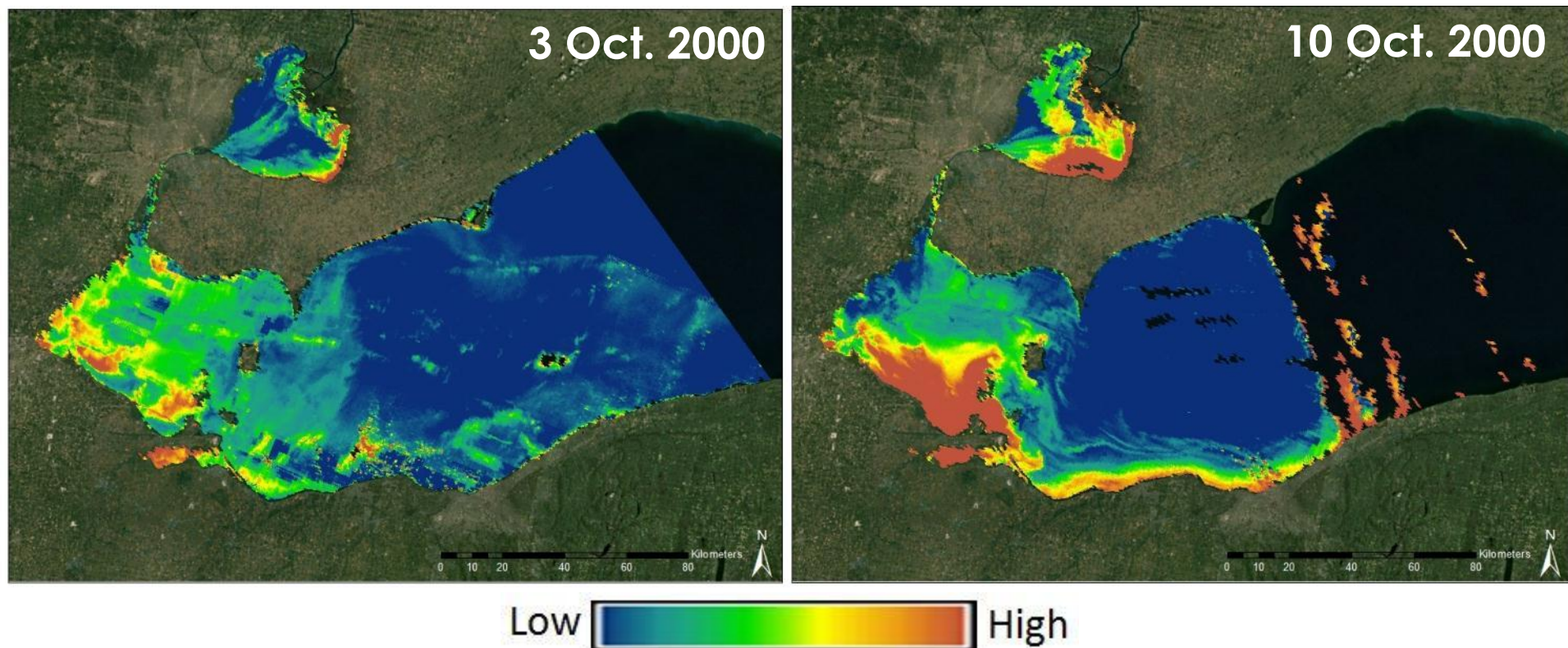
Rainfall in Millimeters



Stormwater Runoff Impacts



Goal: Tool for monitoring stormwater runoff from intense precipitation events and any associated changes in water quality

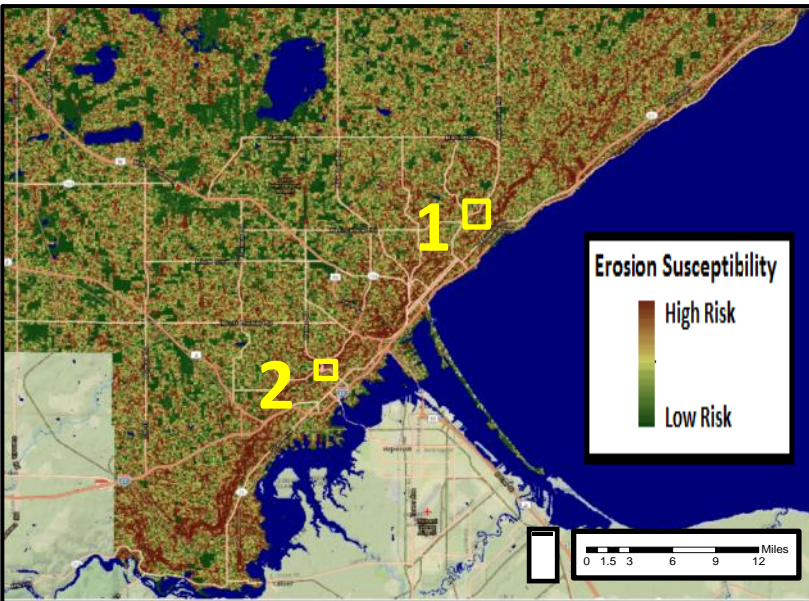
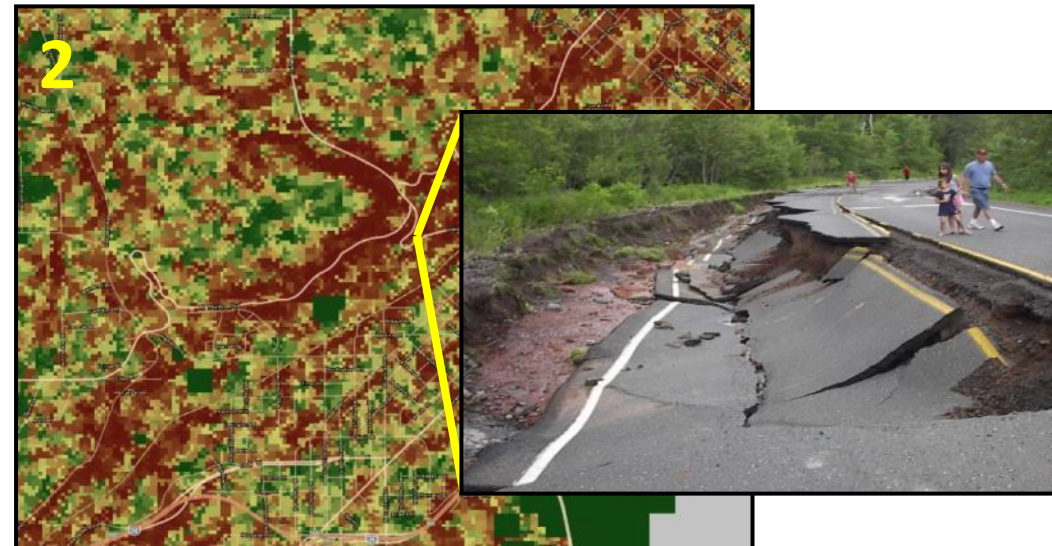
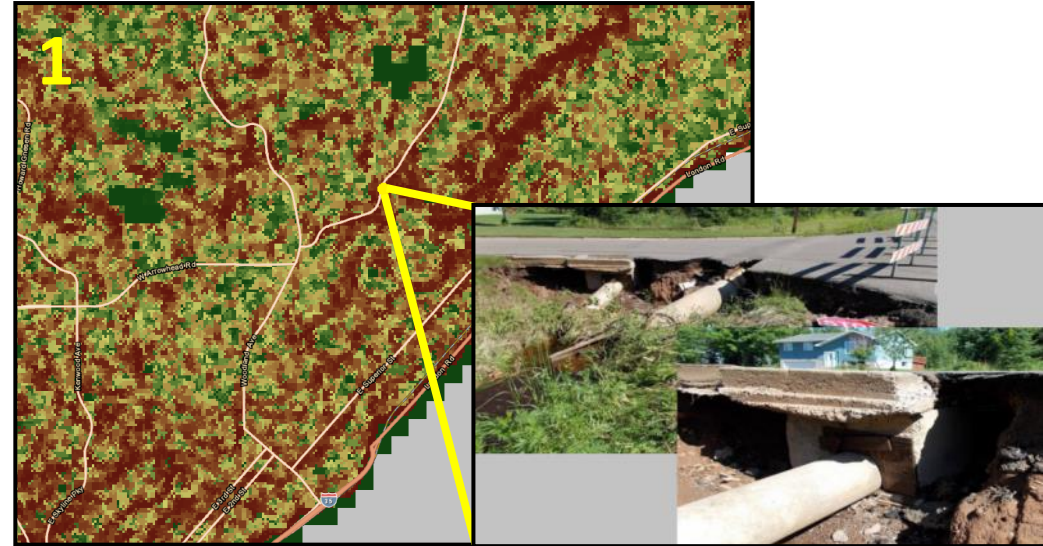


Total suspended sediment (TSS) images before the intense rainfall event (left) and six days after (right).

Soil Erosion



Goal: Erosion susceptibility tool for city planners to identify which locales may be at highest risk of erosion problems



Thank You!



Jamie Favors

james.e.favors@nasa.gov

<http://develop.larc.nasa.gov/>