

# Ohio's Western Lake Erie Basin Collaborative

Karl R. Gebhardt

Deputy Director, Ohio EPA

Ohio Lake Erie Commission



Lake Erie  
Commission



# Background

- On June 13, 2015, the governors of Ohio and Michigan, and the premier of Ontario committed to a goal of reducing phosphorus loadings to Lake Erie by 40 percent.
- The Collaborative is intended to advance efforts toward the proposed nutrient reduction targets put forth in the Great Lakes Water Quality Agreement (GLWQA) and Domestic Action Plans .
- The Collaborative will focus on the western basin watersheds of the Maumee, Portage and Toussaint rivers.
- Actions are within 12 months and 12-36 months.

# Goals of the Collaborative:

- Achieve a 40 percent total load reduction in the amount of total and dissolved reactive Phosphorus entering Lake Erie's western basin by the year 2025 with an aspirational goal of a 20 percent reduction by 2020.
- To use 2008 as the base year from which progress will be measured.
- Each State and Province commits to developing, in collaboration with stakeholder groups, a Plan outlining actions and timelines toward achieving the goals.

# Guiding Principles

- **Implementation** of point and non-point nutrient reduction practices;
- **Verification** of targeted practice implementation and effectiveness;
- **Documentation** of water quality changes resulting through the implementation of nutrient reduction practices;
- **Adaptability** to allow for the modification of programs, practices and policy as new information is obtained and changes occur; and
- **Accountability** to ensure clear areas of responsibilities and that commitments are made and kept toward achieving the goals.

# Partner Agencies and Related Areas of Responsibility

- In general, the responsibility and accountability for ensuring implementation will be with the various state agencies.
- Success will also require close coordination with local governments, NGO's, and federal partners.
- Ohio Dept. of Agriculture has responsibility for agricultural non-point.
- Ohio EPA has responsibility for point source, stormwater , water quality monitoring and achieving water quality targets.
- Ohio Dept. of Health for home sewage treatment systems.

# Project Management

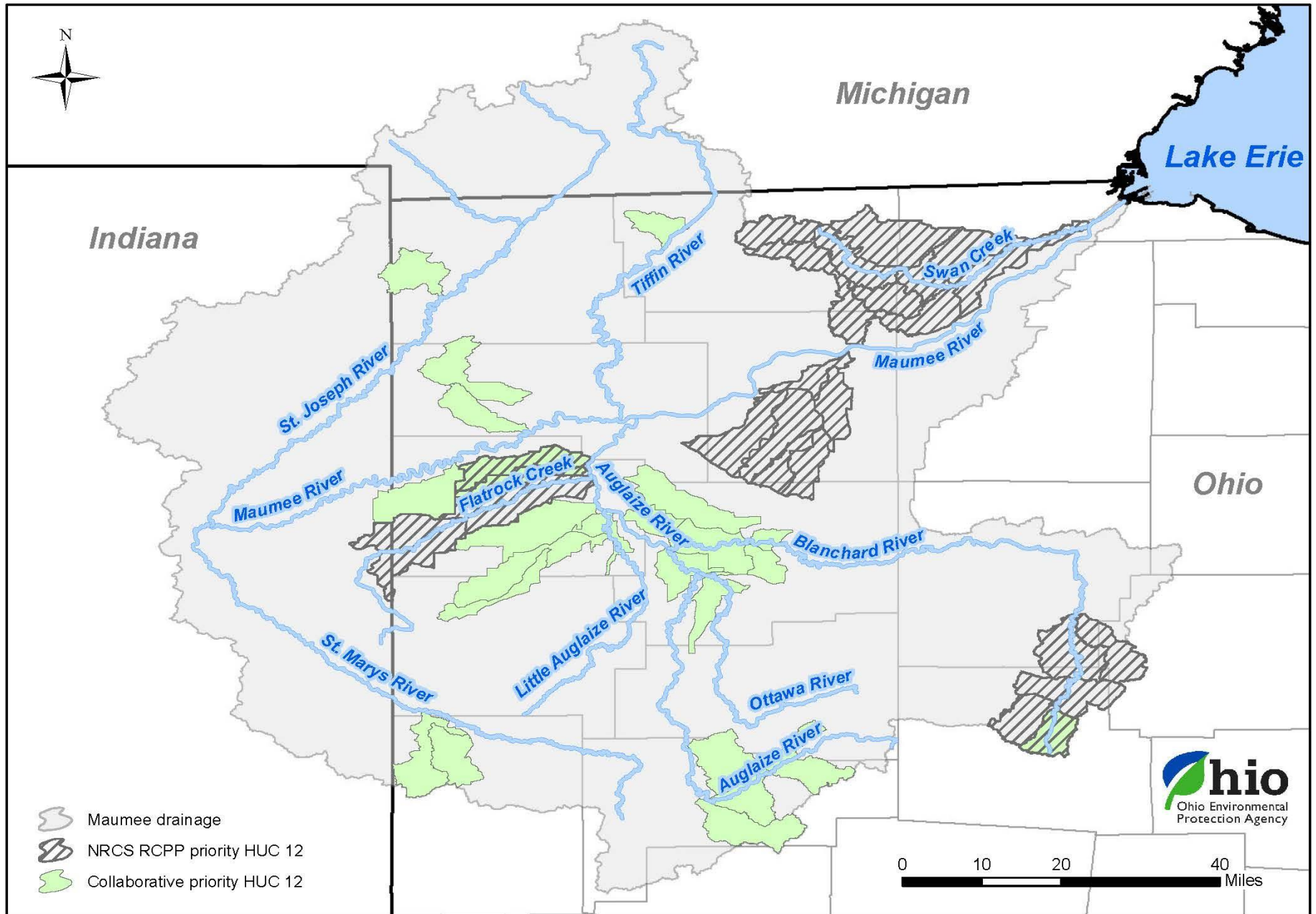
- The Lake Erie Commission will serve as the over-all Collaborative Implementation Plan coordinating entity.



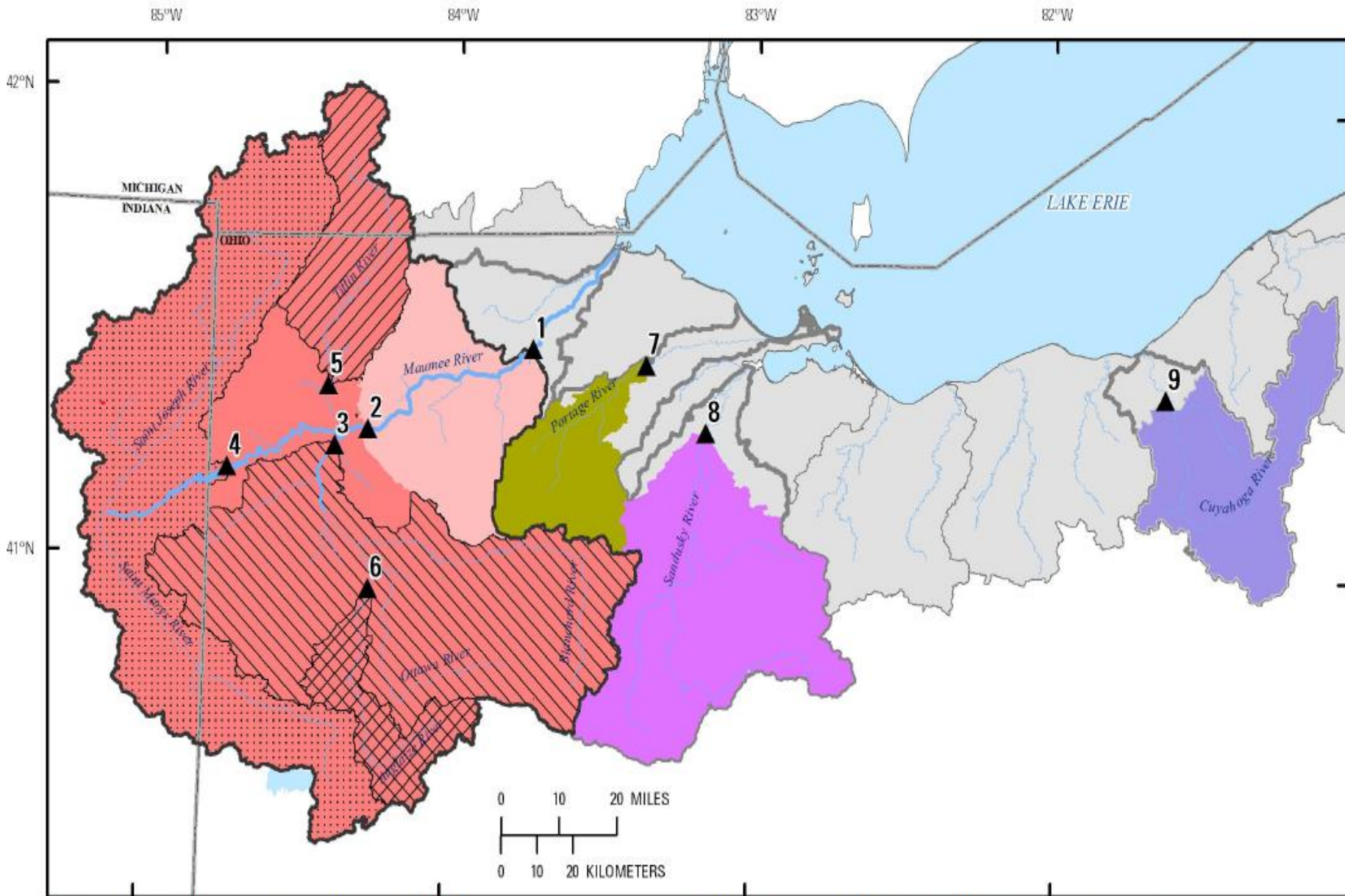
# Stakeholders



# Maumee River Priority Watersheds (HUC 12)







**Figure 1: Sampling stations discussed in this report.**

**Station 1:** Gage 04193500 - Maumee River at Waterville

**Station 2:** Gage 04192500 - Maumee River near Defiance

**Station 3:** Gage 04191500a - Auglaize River near Defiance d/s Dam

**Station 4:** Gage 04183500 - Maumee River at Antwerp

**Station 5:** Gage 04185318 - Tiffin River near Evansport

**Station 6:** Gage 04186500 - Auglaize River near Fort Jennings

**Station 7:** Gage 04195500 - Portage River at Woodville

**Station 8:** Gage 04198000 - Sandusky River near Fremont

**Station 9:** Gage 04208000 - Cuyahoga River at Independence

# Ohio Lake Erie Commission

- Ensure there is annual coordination between state and federal agencies for identifying priority programs, priority areas, and timelines.
- Coordinate the member agencies and federal partners on the establishment of a short term and long-term WLEB fiscal operations plan.
- Seek cooperation, request coordination and may review funding requests made to federal or state agencies from state agencies, government subdivisions and organizations for funding related to Lake Erie
- Hold biannual round-tables including representatives from Indiana, Michigan and Ontario to evaluate progress

# Ohio Environmental Program

- Establish a process and protocol for sampling and water quality monitoring specific to the Collaborative and Annex 4.
- Develop a recommended non-regulatory target “nutrient diet” for priority watersheds based on best available data.
- Establish priorities and strategy for CSO’s and point sources, including funding assistance.
- Leadership role with Indiana, Michigan and Ontario to ensure a consistent sampling and lab testing protocol is in place and being followed.

# Ohio Department of Agriculture

- Monitor the progress to finalize and present results from edge-of-field monitoring and research.
- Monitor the progress of OSU and other state and federal agencies to complete revisions to the Tri-State Phosphorus Index or develop a Phosphorus Index specific to Ohio.
- Ohio Lake Erie Conservation Reserve Enhancement Program (LE-CREP) to achieve voluntarily establishing 67,000 acres of filter strips, riparian buffers, hardwood tree plantings, wildlife habitat, and field windbreaks.

# Ohio Department of Health

- Working through County Health Departments, will initiate an intensive program to identify failing home sewage treatment systems within targeted watersheds and develop specific action plans and timetables for addressing failing/failed home sewage treatment systems.

# Assumptions Going Forward

- The first 12 months will be setting up the foundation from which the next 12-36 months will increase targeted implementation and verification.
- All sources of nutrients will be addressed and will be held accountable for verifiable reductions.
- A combination of voluntary and regulatory approaches will be considered to achieve reduction goals.
- Doing more of the same, in the same way, probably will not get us to where we need to be.

***“Rhetoric is a poor substitute for  
action” – Teddy Roosevelt  
but Teddy ...***

***“just any action won’t lead to  
desired results” –Karl Gebhardt***



# Thank you!

<http://www.epa.state.oh.us/collaborative>



Lake Erie  
Commission

