

Québec Mayors Take Action

GLSLCI AGM - June 20th, 2013

Michelle Morin-Doyle,
Deputy Mayor, City of Québec

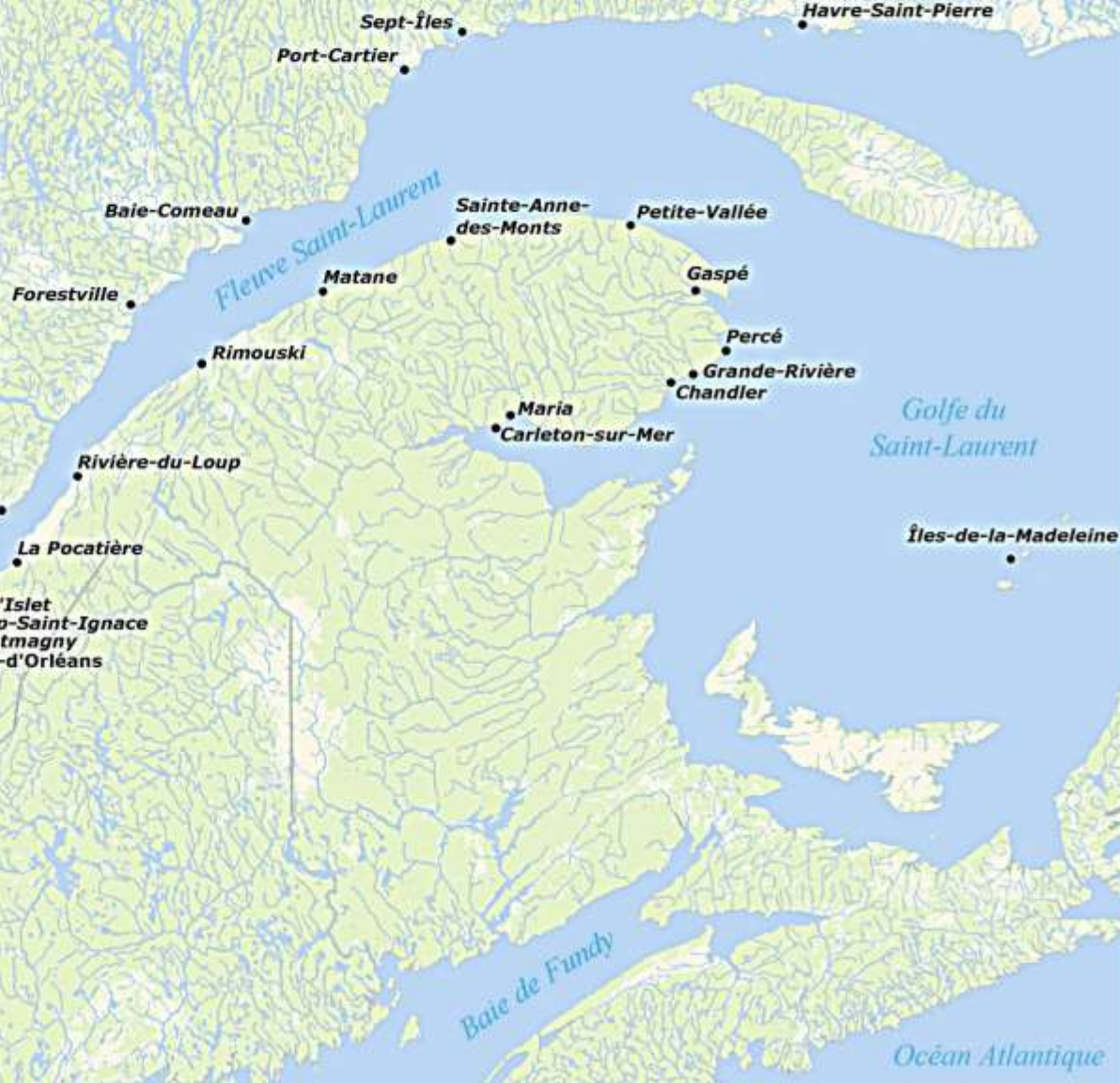


**Communauté
métropolitaine
de Québec**

First Québec Regional Meeting: June 26th, 2013



Participating Québec Municipalities



Following Québec Regional Meetings

September 26th, 2012 / January 25th and May 3rd, 2013



Group picture of mayors, January 25th, 2013

Photo credit: City of Québec

Six New Quebec Members since the last AGM

- Beauharnois
- Gaspé
- Contrecoeur
- Boucherville
- Candiac
- Port-Cartier

Main Topics Discussed at Regional Meetings

- Municipal infrastructure
- Climate Change Adaptation
- Water Levels
- **Protection and restoration of shorelines**
- Invasive Species
- Tourism Development
- Natural Resource Extraction
- Integrated Management of the St. Lawrence River
- Future of ports and docks on the St. Lawrence River
- Closing of the Quebec City DFO Marine Rescue Center

A Shoreline Flagship Project

La Promenade Samuel de Champlain

- Area : 200,000 square meters (2.1 million square feet), along 2.5 km (1.5 mile) of St. Lawrence River shoreline, equivalent to 125 skating rinks
- Vegetation : more than 100,000 plants, including 1,500 trees
- Activities created : biking, inline skating, soccer, walking, kayaking, picnics, public art displays, interpretative trail
- Start of the work : June 12th, 2006
- Inauguration : June 24th, 2008

La Promenade Samuel de Champlain – Before



La Promenade Samuel de Champlain – After



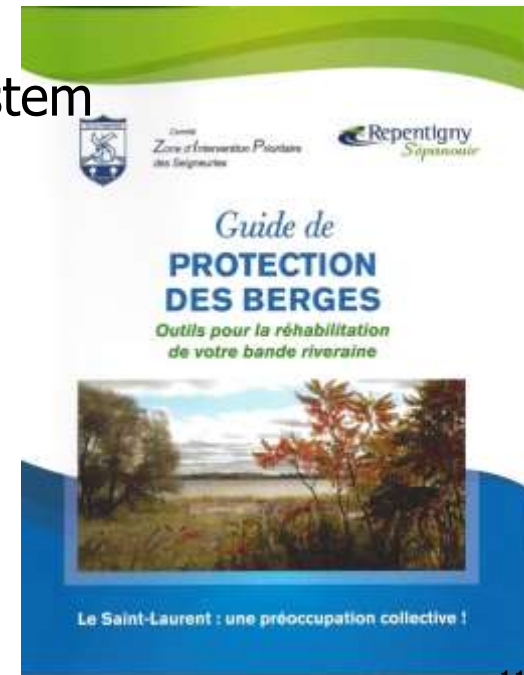
An Example of Shoreline Erosion and State of Shoreline Infrastructures on the St. Lawrence

- 2011 study made at Varennes and Verchères, two GLSLCI members cities located on the South shore of Montreal



City of Repentigny's Riparian Strip Ecologic Rehabilitation Project

- The project had four phases:
 - Phase 1: Characterization of 9.3 km of riparian strip
 - Phase 2: Public information
 - Phase 3: Rehabilitation of a strip at Lebel Island
 - Phase 4: Production of a Shoreline Protection Guidebook
- In addition of benefiting the St. Lawrence ecosystem and water quality, this project aims to...
 - Boost ecotourism
 - Protect fragile aquatic environments and natural resources along the shoreline
 - And raise shoreline resident's awareness with the production of a guide



City of Repentigny's Riparian Strip Ecologic Rehabilitation Project



Mapping of Quebec Municipal Shorelines

- Characterization of the state of shorelines in Québec municipalities all along the St. Lawrence
- Mapping of the projects and the investments needs throughout all the River, Estuary and Gulf
- Production of a comprehensive portfolio to be used:
 - in the current negotiations re. the next federal infrastructure fund
 - in preparation of the federal and provincial budgeting processes
 - and/or during the next provincial electoral campaign
- Final report to be submitted next October

Bâtir. Dans un même esprit.



***Communauté
métropolitaine
de Québec***