

Eagle Mine

June 2013

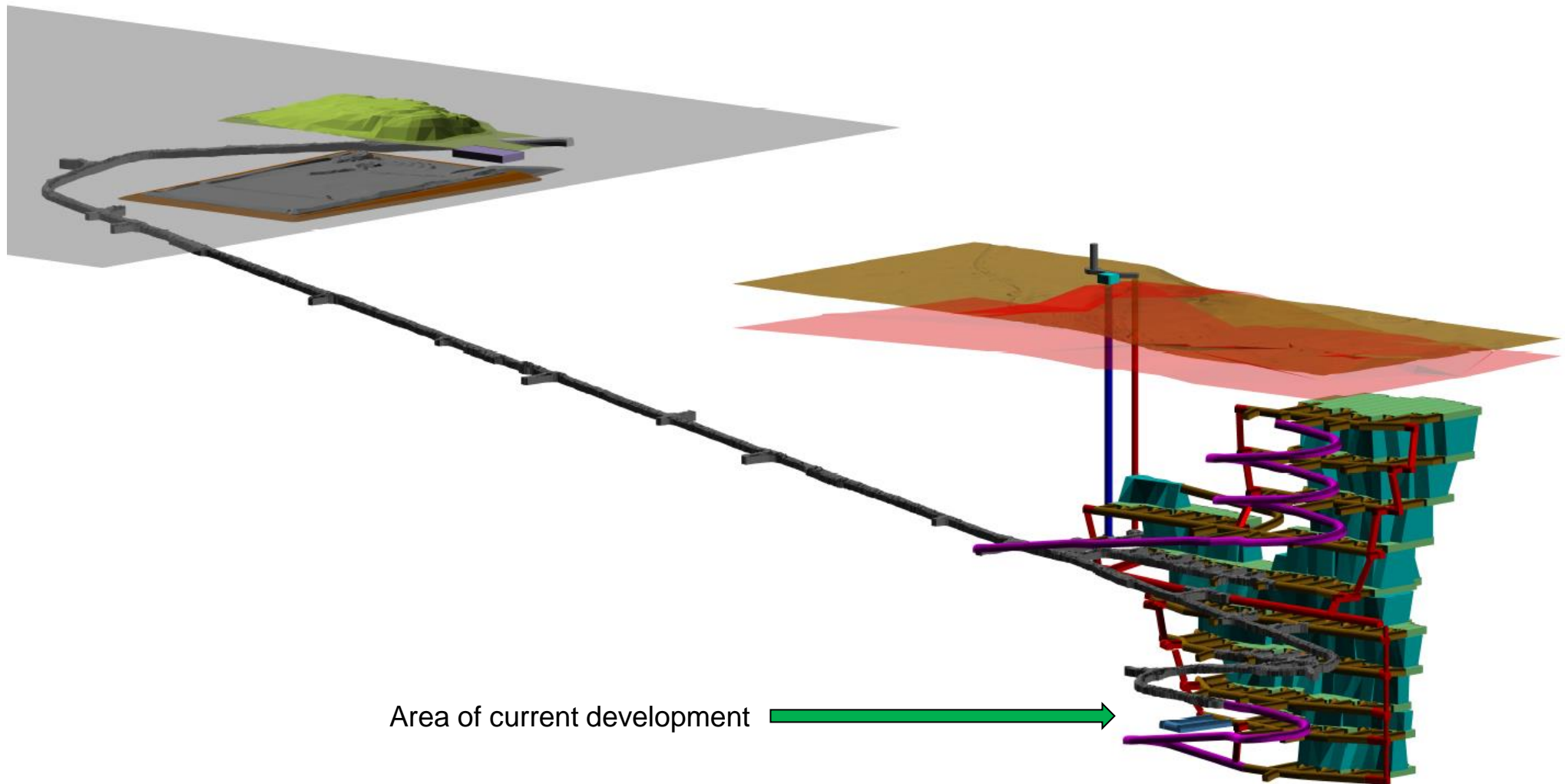


Eagle Mine



Eagle Mine

Underground development



Eagle Mine



Community Environmental Monitoring of the Rio Tinto Eagle Mine

Rio Tinto Eagle Mine already has State of Michigan regulatory oversight. In addition, independent third-party monitoring provides community oversight of the mine's environmental performance. This is how it works:

