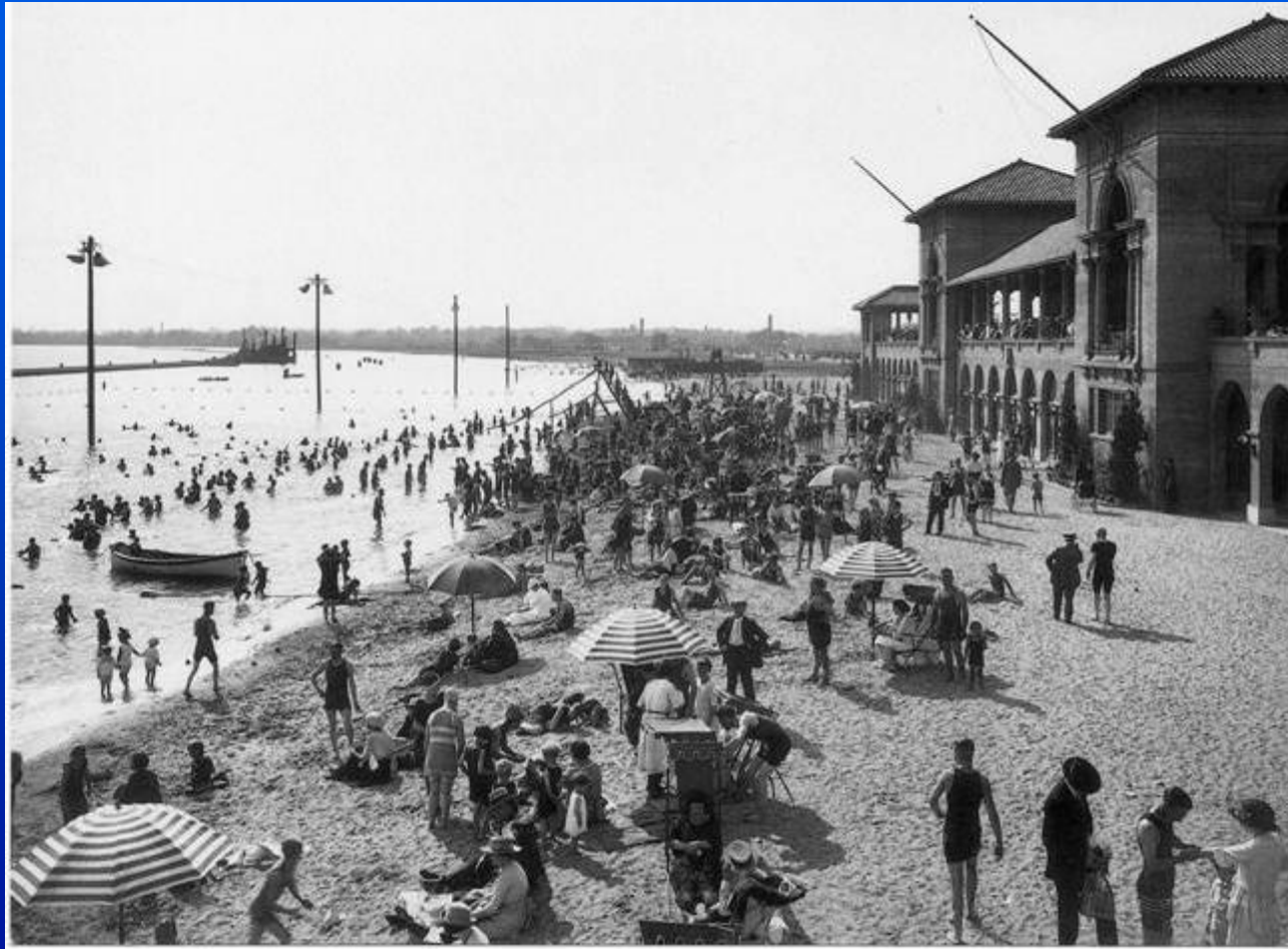
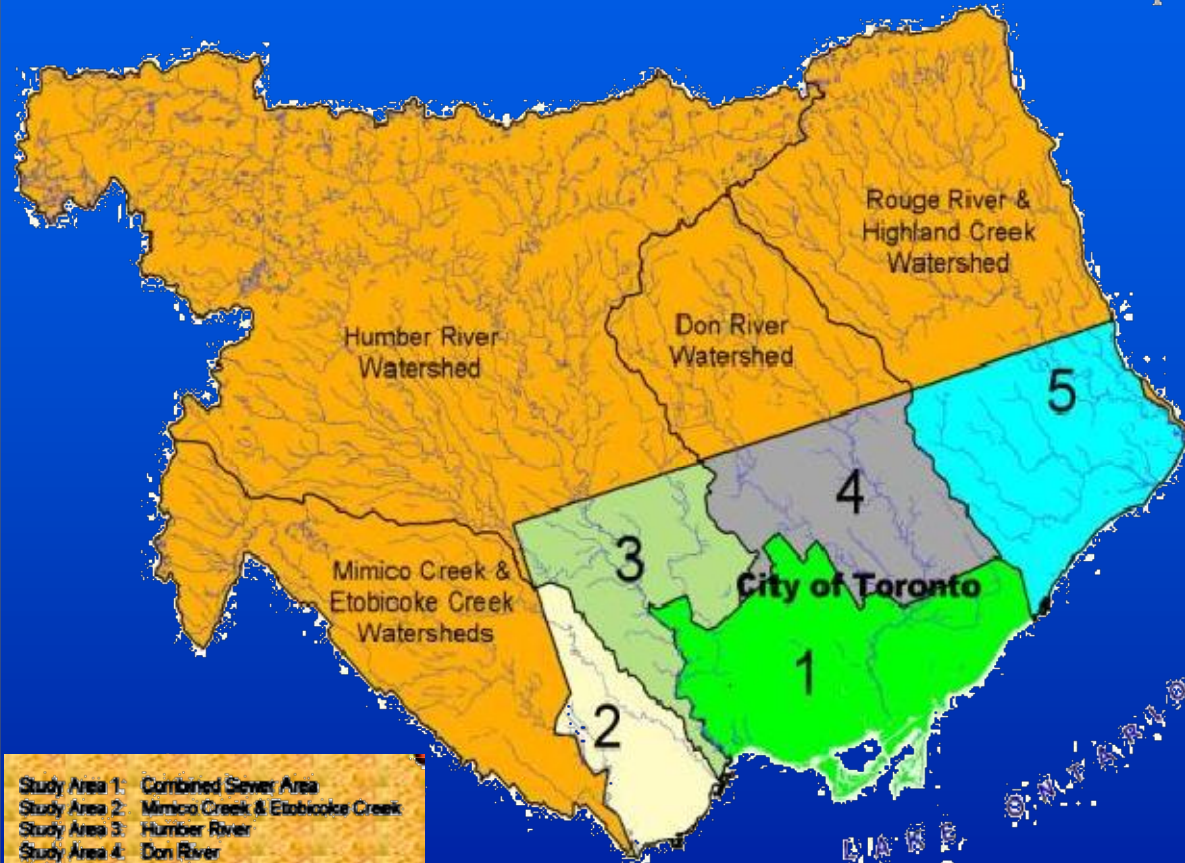
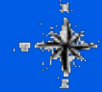


TORONTO BEACHES



City of Toronto - Study Area 5
Highland Creek & Rouge
River Watershed

Map 1.1
Study Area Map



- Study Area 1: Combined Sewer Area
- Study Area 2: Mimico Creek & Etobicoke Creek
- Study Area 3: Humber River
- Study Area 4: Don River
- Study Area 5: Highland Creek & Rouge River

0 2 4 6 8 Kilometers



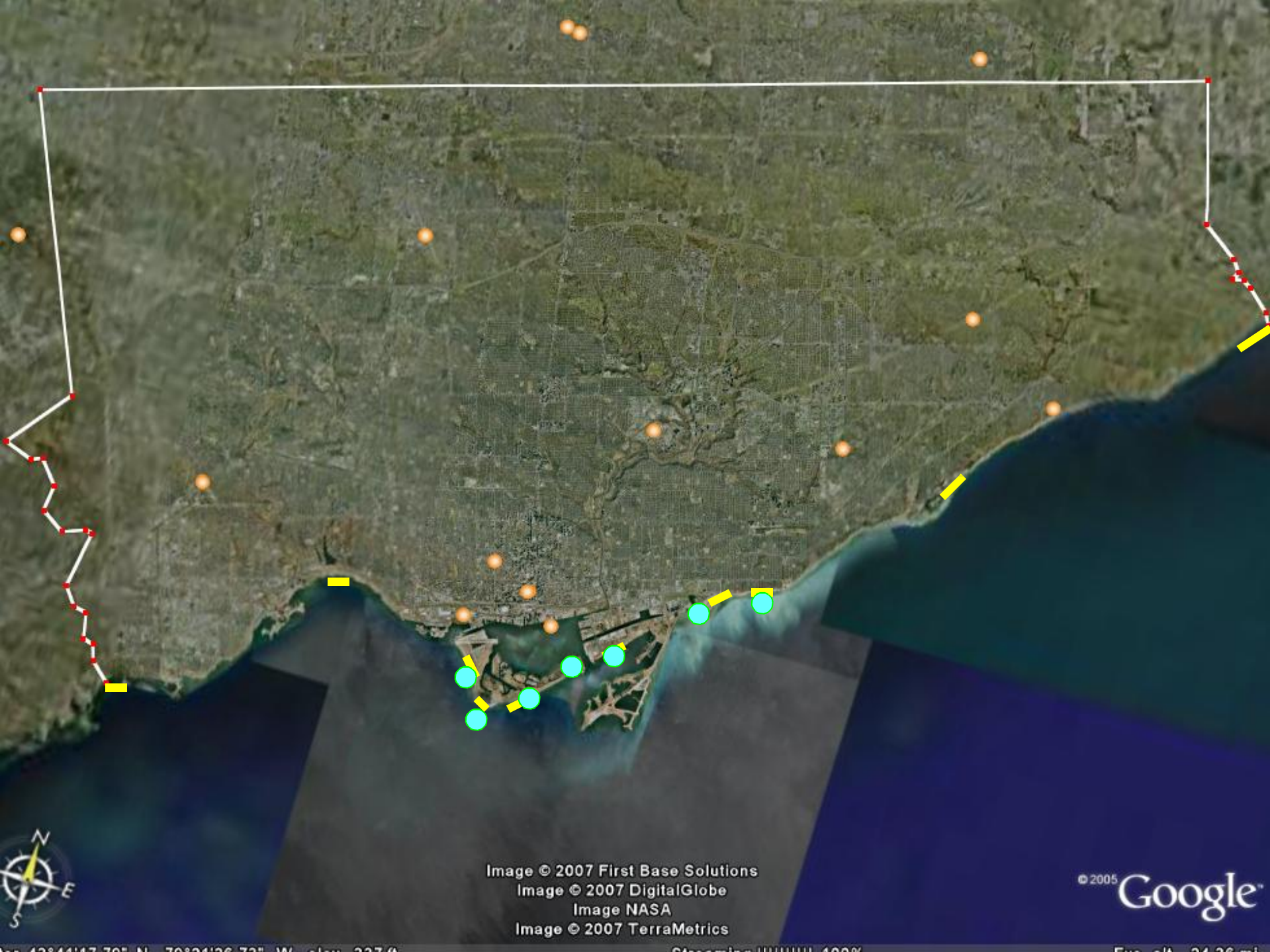


Image © 2007 First Base Solutions
Image © 2007 DigitalGlobe
Image NASA
Image © 2007 TerraMetrics

© 2005 Google



















History of Beach Monitoring in Toronto

- 1983 – Revise Beach Monitoring Protocol
- 1983 – First Posting of Sunnyside Beach
- 1983 (Winter) - Initiatives developed to improve Toronto's Shoreline water quality by Public Works, MOE and Public Health
- 1986 - Beaches Hotline first used
- 1989 - Lifeguards first assist in posting of beaches
- 1995 - Public Works samples Eastern Beaches for Public Health

History of Beach Monitoring in Toronto

- 1999 - Public Health and Works and Emergency services formalize a Beach Monitoring Agreement
- 2002 - Start Monitoring 7 days per week at beaches
- 2004 – Microbial Source Tracking Studies with Environment Canada
- 2010 – Test of Predictive Models based on Multiple Linear Regression analysis of key variables