

Three Waterfront Designs: Toronto, Sandusky, & Detroit

Panel: Creating Healthier Communities Through Waterfront Access

5 June 2019

Tim Dekker, LimnoTech

Elizabeth Silver, Michael Van Valkenburgh Associates

Engineering Perspective

Tim Dekker

LimnoTech

- Environmental & Water Resources focus
- Manage legacy environmental problems
- Control CSO discharges
- Develop storm water management plans
- Limit watershed contaminant loads
- Characterize and remediate contaminated sediments
- Manage AOC characterization & cleanup

Design Perspective

Liz Silver

Michael Van Valkenburgh Associates

- Landscape Architecture & Planning focus
- Develop plans for large public parks, waterfronts, university campuses, intimate gardens, and private landscapes
- Shape the creation and restoration of livable urban fabric
- Create memorable landscapes that become a part of daily life

The Great Lakes



Port Lands Flood Protection

Toronto, ON (2007-2023)

Governance: Waterfront Toronto

Budget: \$1.25+ Billion CAD

Capital Funding: Federal / Provincial / Municipal

Management: TRCA / PF&R

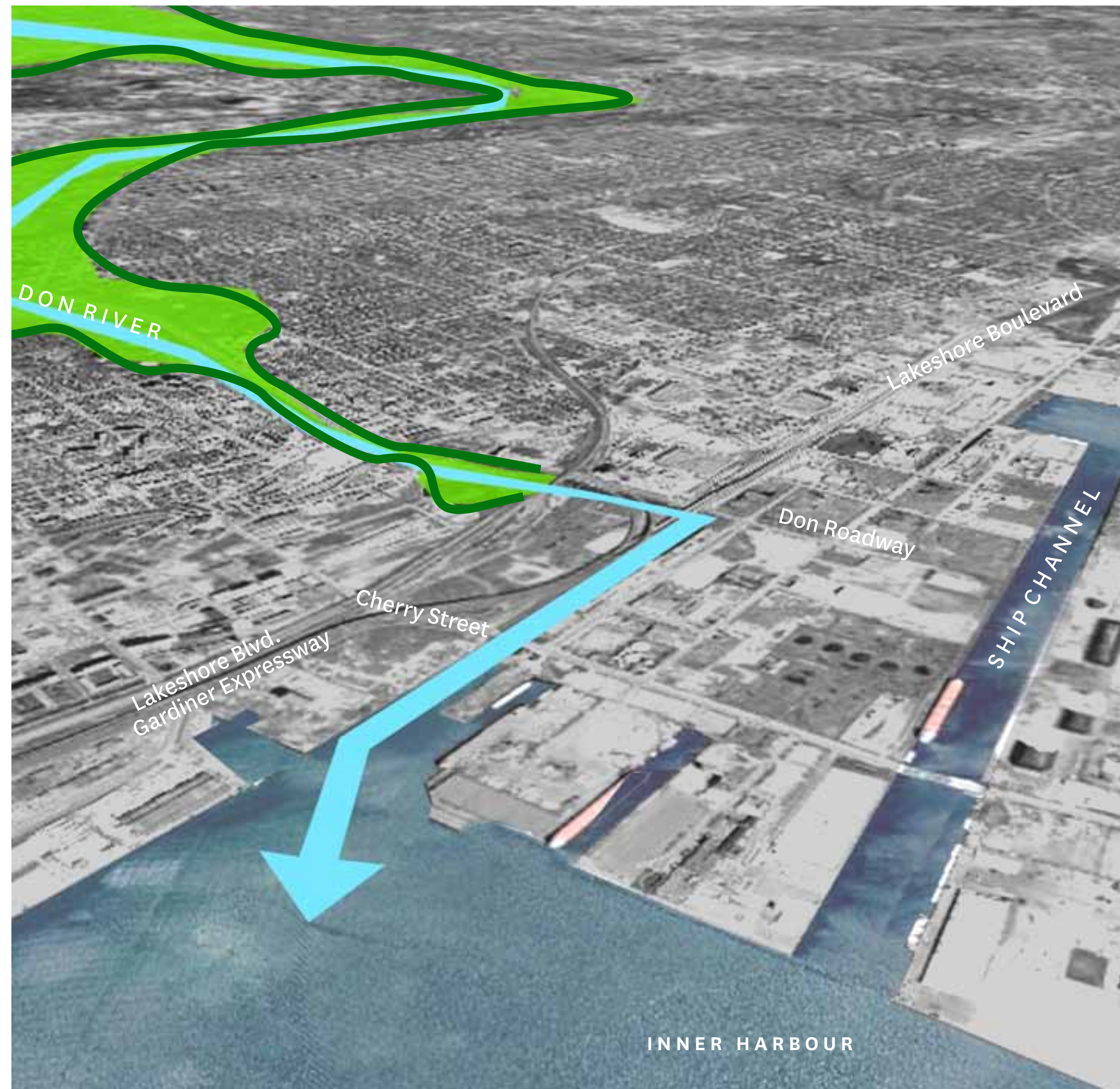
Land Mapping: City Park / Private / Waterway

Size: 235 Acres Parks, Floodway, and Enabling Infrastructure
(Opening 715 Acres for Development)

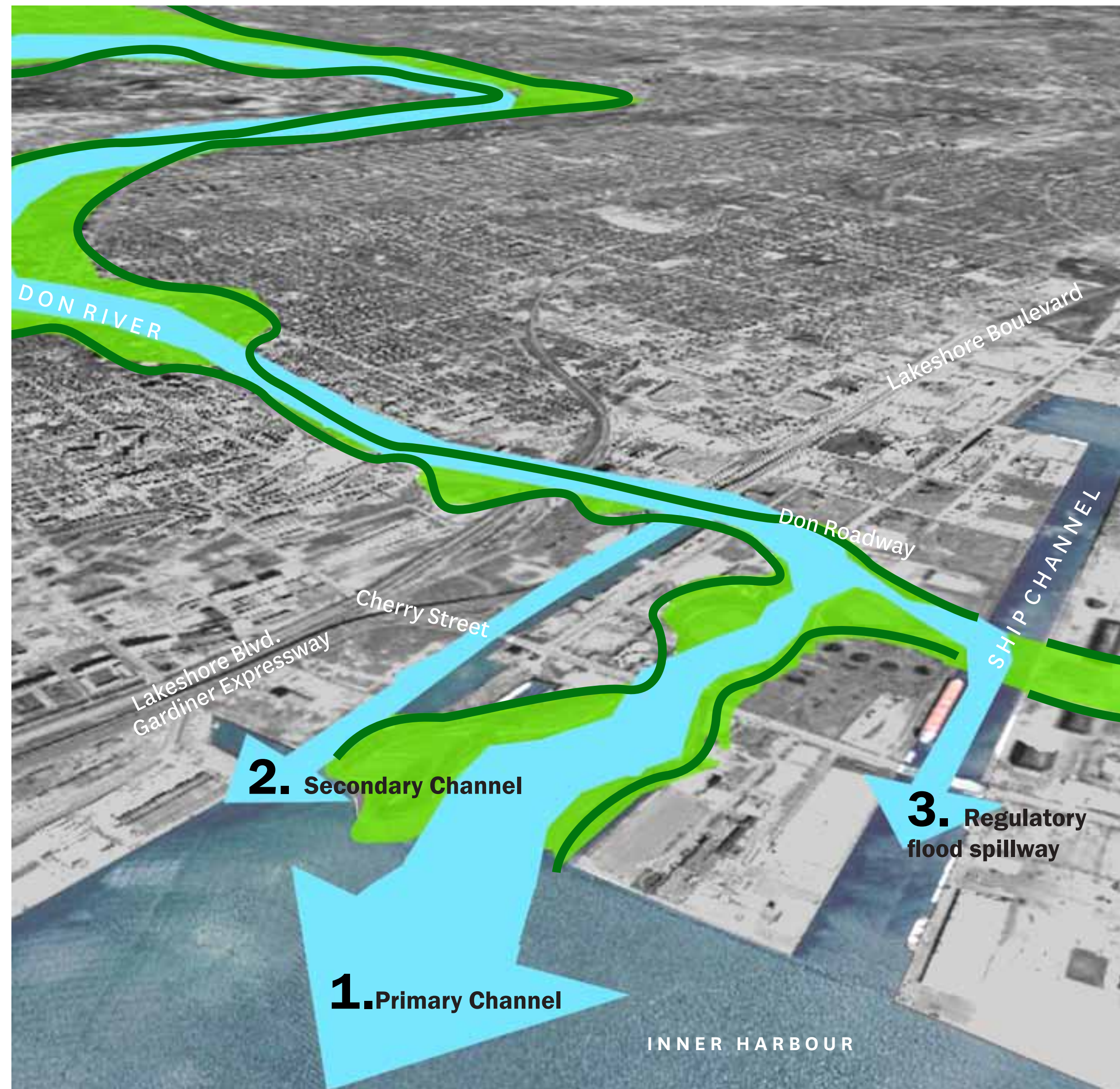


**Water is an incredible force
and any successful design
must work with it.**

Hurricane Hazel, 1954

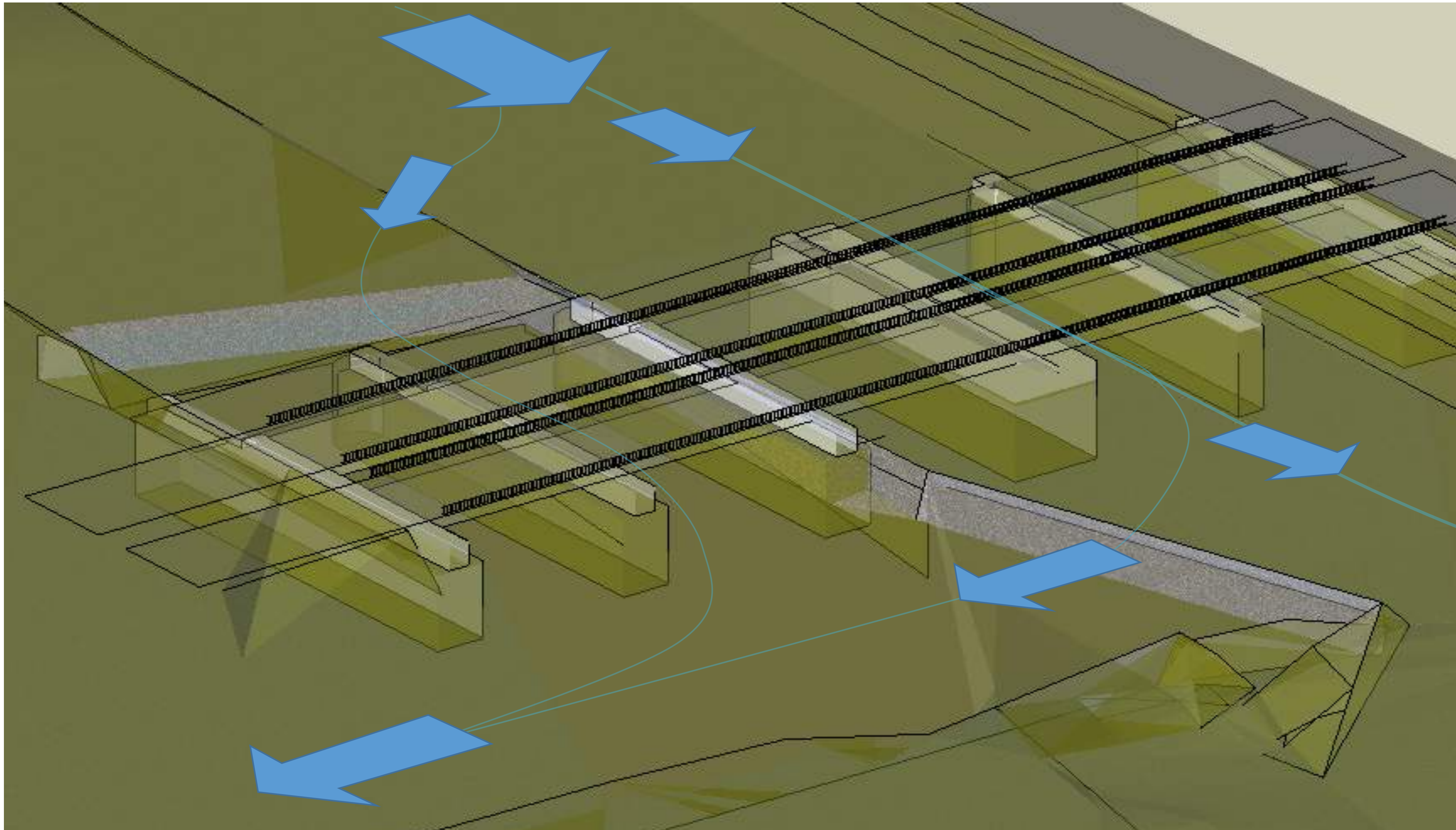


Respond to the Don River's existing conditions

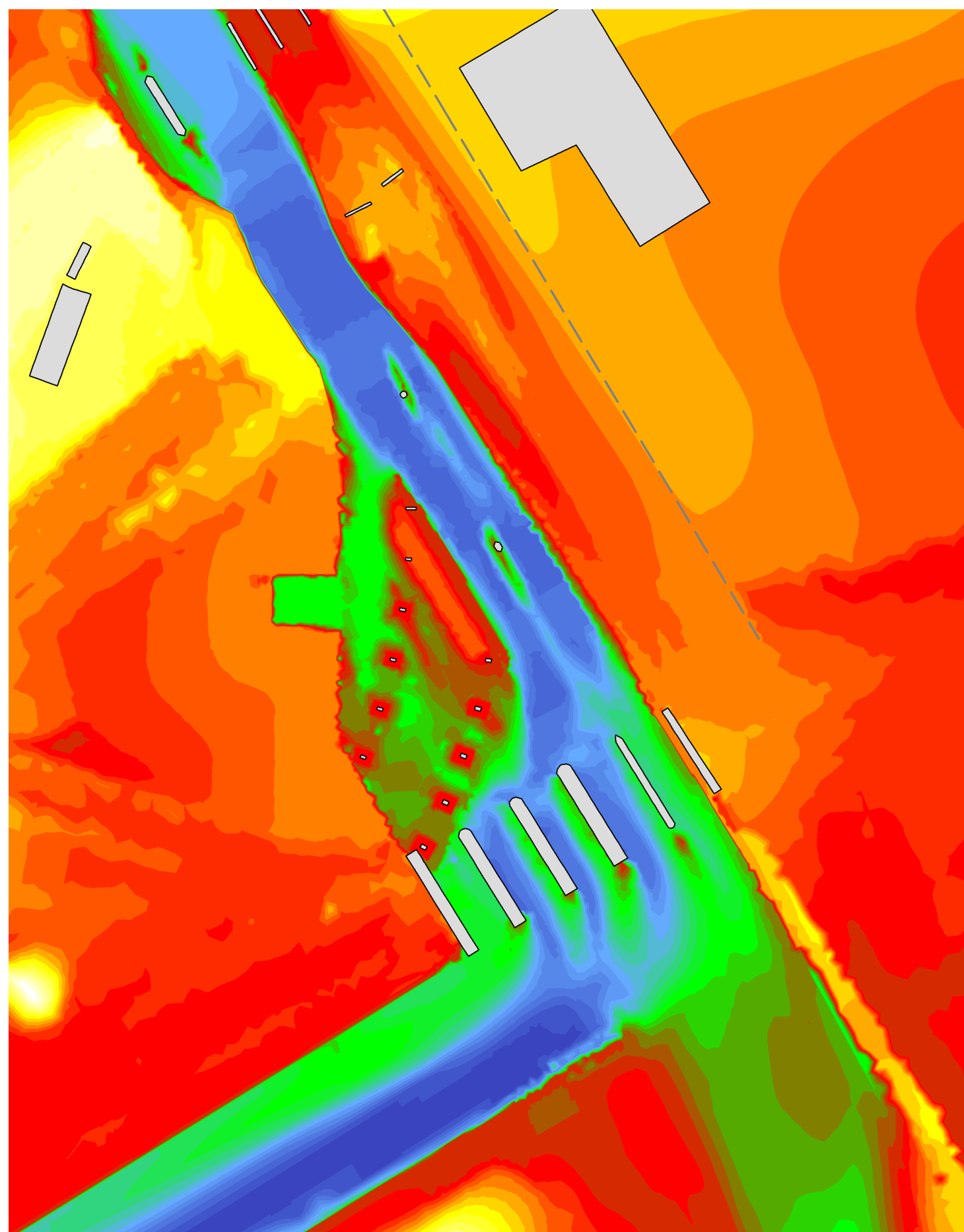


Achieve flood protection through a three-tier system and allow the new river to structure the urban form

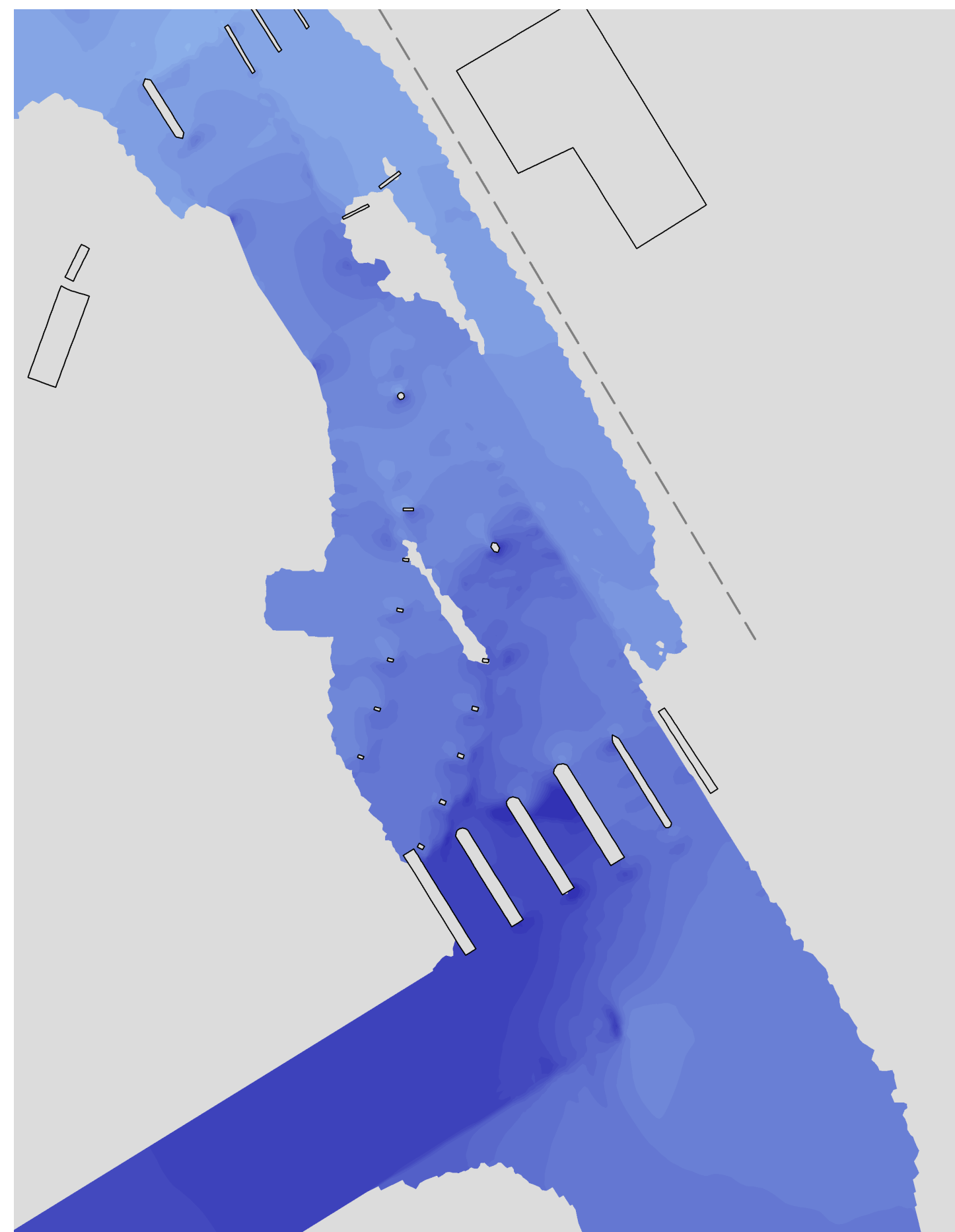




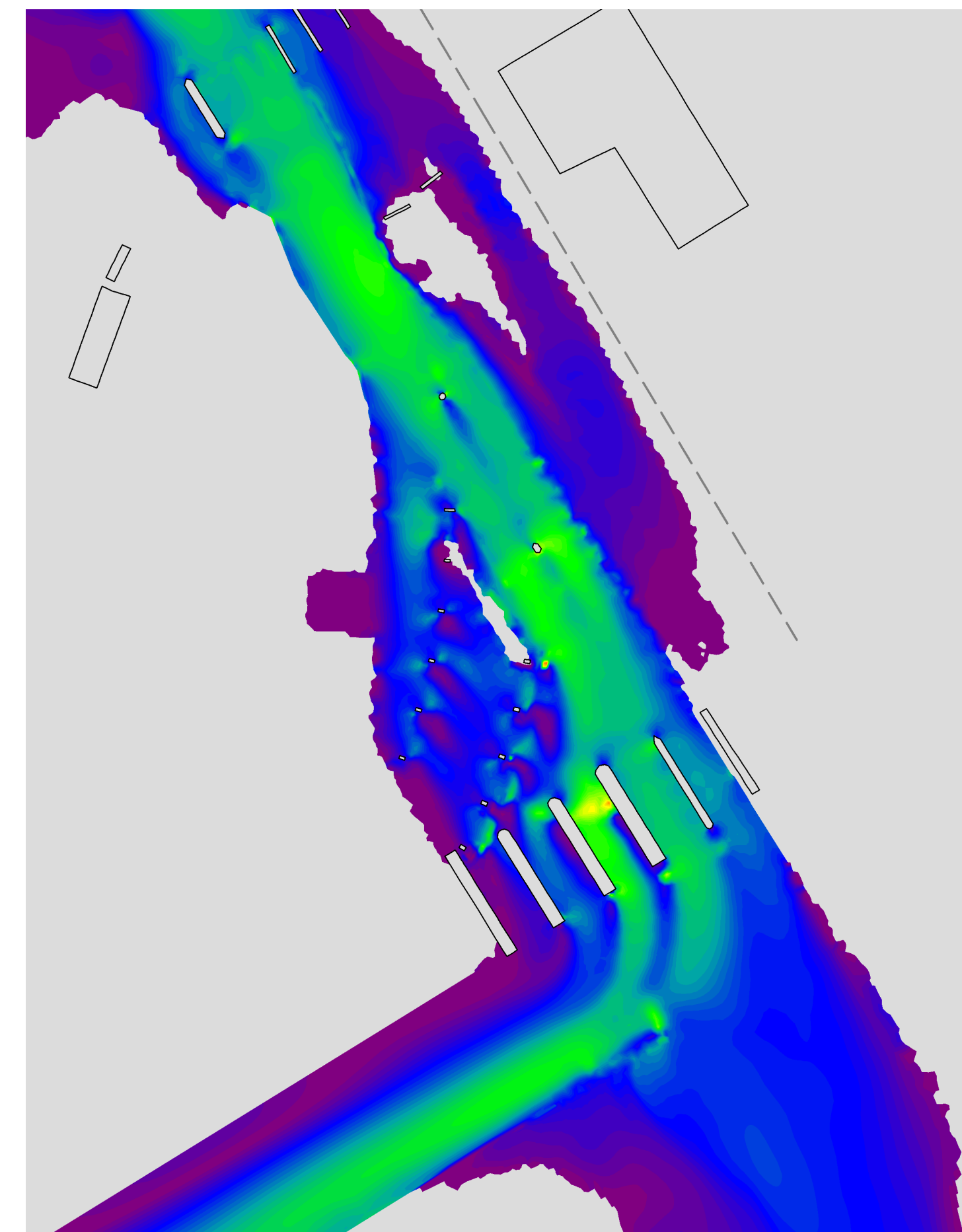
Weir Configuration at Lakeshore Bridge Crossing



Morphology



Water Surface Elevations



Velocity