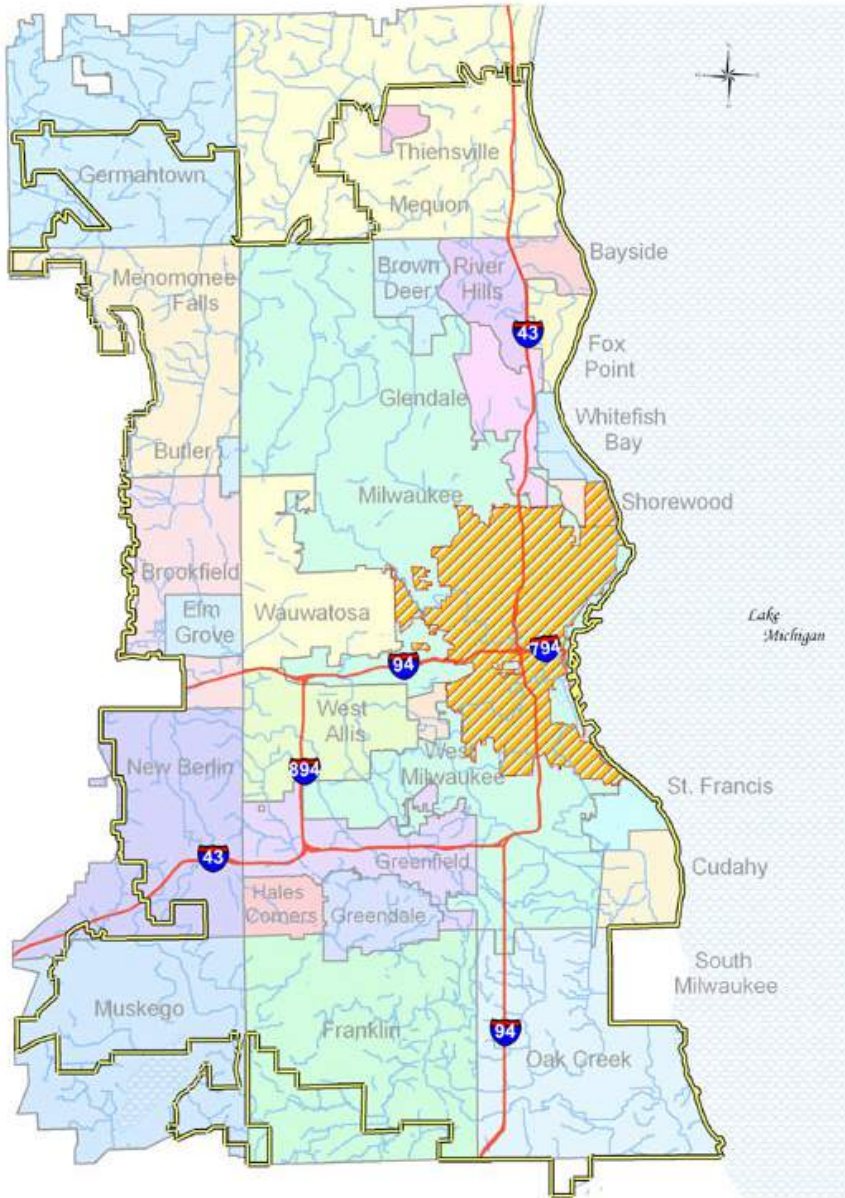


Planning for the Future: Keeping Waterfronts Resilient and Sustainable



Milwaukee Metropolitan Sewerage District



We Serve:

- 1.1 Million Customers
- 28 Municipalities

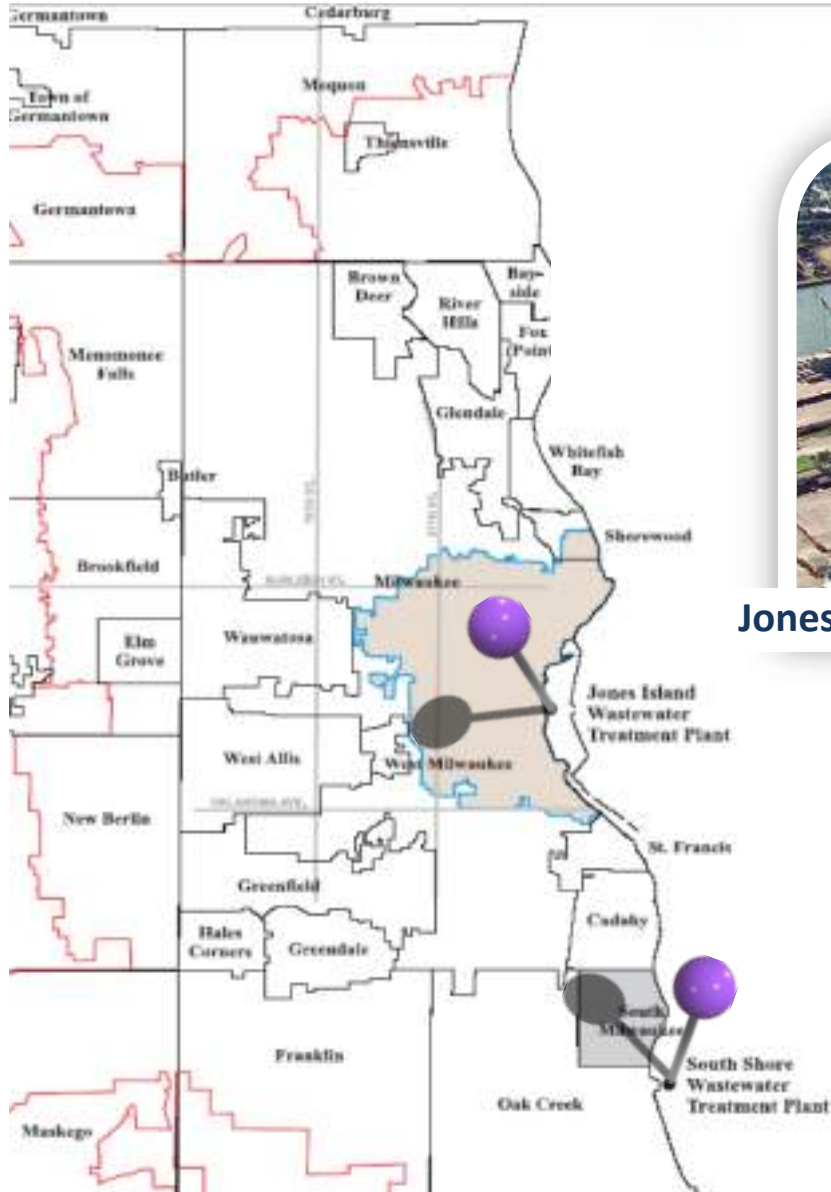
We Protect the Public & Lake Michigan:

- Convey/Store/Reclaim Wastewater
- Manage Flooding

We Have:

- 300 Miles of Sewers (municipalities and individuals have 6,000 miles!)
- 521 MG Tunnel System
- 2 Water Reclamation Facilities

MMSD's Water Reclamation Facilities



Jones Island



South Shore



Milorganite[®] **90** YEARS
CELEBRATING

The logo features the brand name 'Milorganite' in a bold, white, sans-serif font. To its right is a large '90' where the '0' is replaced by a detailed illustration of a diamond. The word 'YEARS' follows in a smaller, white, sans-serif font. Below the '90' and 'YEARS' is the word 'CELEBRATING' in a smaller, white, sans-serif font. A thick red diagonal line is drawn across the entire logo from the top-left to the bottom-right.

93

Deep Tunnels

A photograph showing a large, circular tunnel under construction. The tunnel has a rough, brownish interior. In the center, there is a smaller, more finished tunnel. A small, dark, rectangular object is visible at the end of the inner tunnel. The lighting is dim, with some bright spots from construction equipment.

**300 Feet
Below ground**

**521 Million
Gallons of Storage**

**28.5 Miles
Long**

**17- to 32-feet
In Diameter**

**Designed to
minimize basement
backups and for 1-2
overflows per year.**

98.4%

Capture & Clean

Since 1993



MMSD's 2035 Vision

Integrated Watershed Management Goals:

Zero sanitary sewer overflows

Zero combined sewer overflows

Zero homes in the 100 year floodplain

Acquire an additional 10,000 acres of river buffers through Greenseams®

Use green infrastructure to capture the first 0.5 inch of rainfall

Harvest the first 0.25 gallons per square foot of area of rainfall

Energy Efficiency and Climate Mitigation & Adaptation Goals:

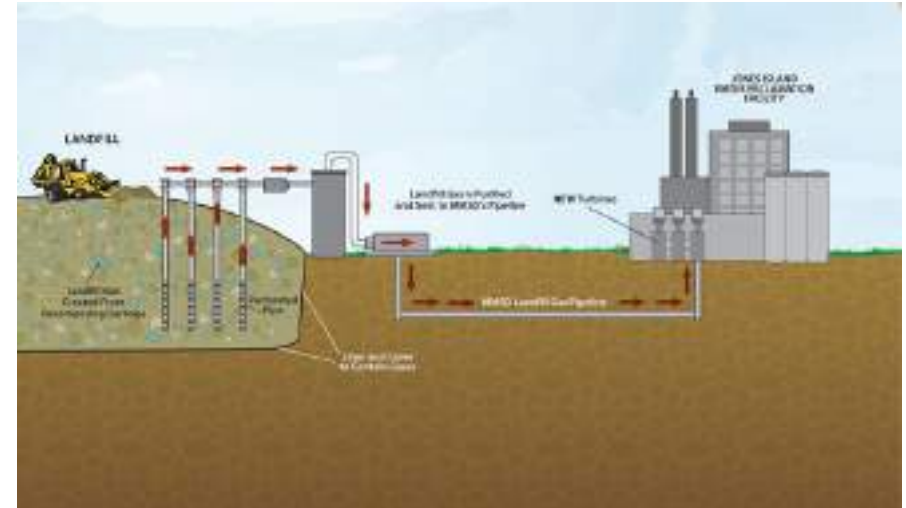
Meet 100% of MMSD's energy needs with renewable energy sources

Meet 80% of MMSD's energy needs with internal, renewable sources

Use the Greenseams® Program to provide for 30% sequestration of MMSD's carbon footprint

Reduce MMSD's carbon footprint by 90% from its 2005 baseline

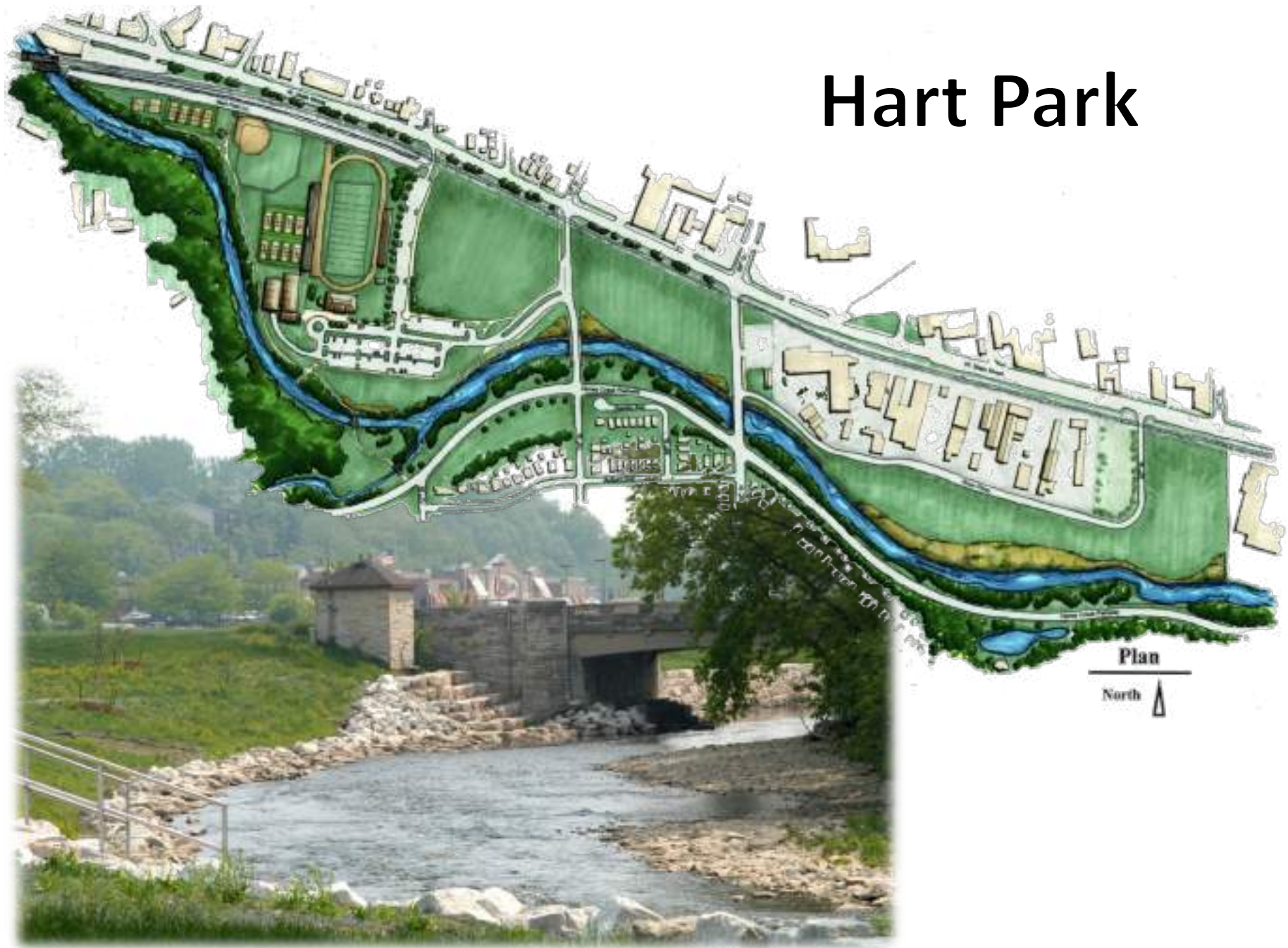
Landfill Gas Project



Valley Park Project



Hart Park



County Grounds



Pulaski Park Kinnickinnic River Flood Management Project



Kinnickinnic River - 2026



Underwood Creek



Managing Water Where it Falls

22,187

Distributed
since 2002

Rain Barrels

Total Storage =

1,264,300

Gallons



Green Roofs

Managing up to
512,000
Gal. Per Storm





Green Infrastructure

43

Since 2002

Million Gallons



Planning for the Future: Keeping Waterfronts Resilient and Sustainable



Kevin Shafer
Executive Director
Milwaukee Metropolitan Sewerage District
kshafer@mmsd.com
414-225-2088