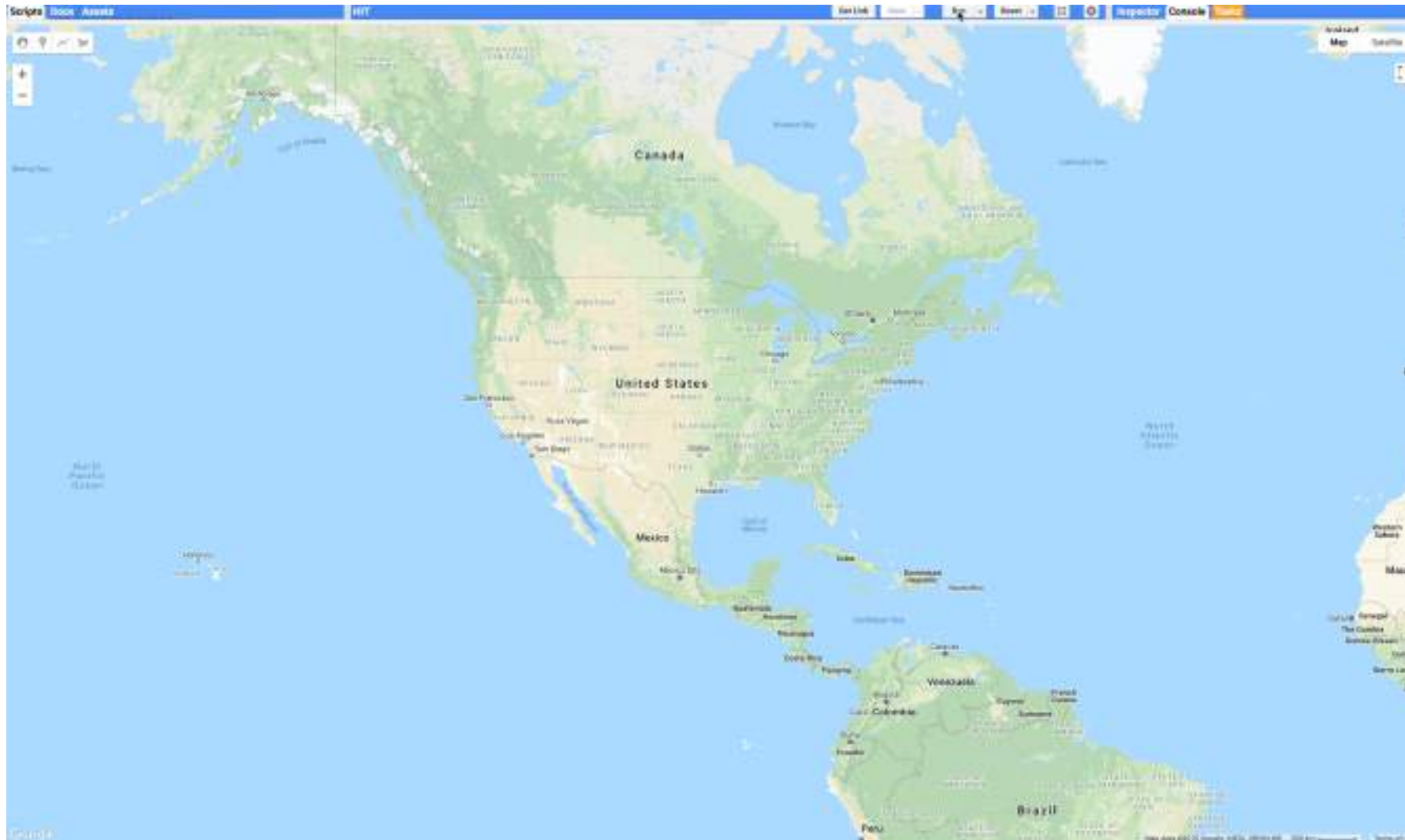
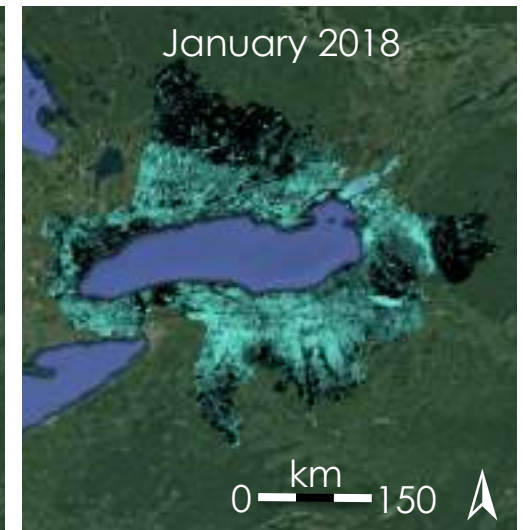
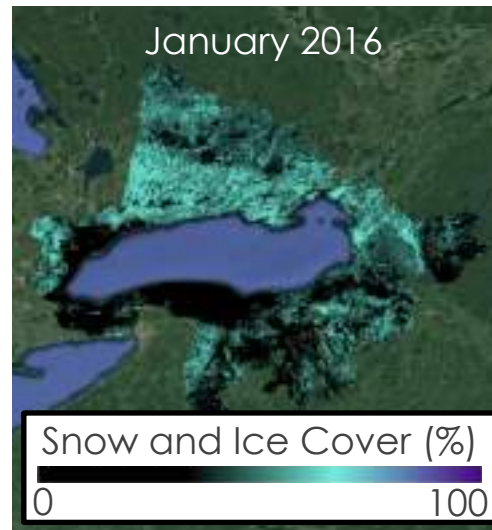


Hydrologic Inputs Tool



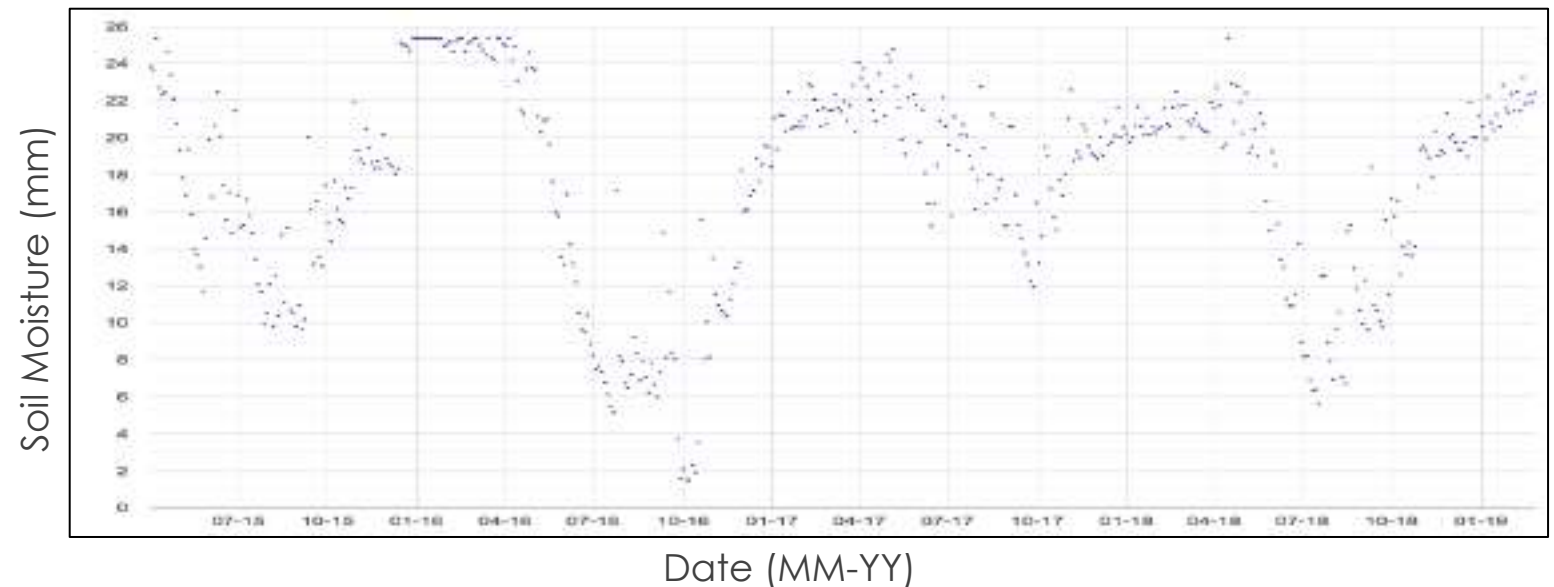
Hydrologic Inputs Tool Results

- ▶ Relative comparison of parameters through time can demonstrate the impact of environmental conditions on water levels



- ▶ Time series of an environmental parameter can highlight yearly fluctuations and patterns through time

Soil Moisture, 2015 to 2019



Watershed Conditions Tool

1. Select Year

2018

2. Select Month

1

3. Select Variable

Snow Cover

4. Select Study Area

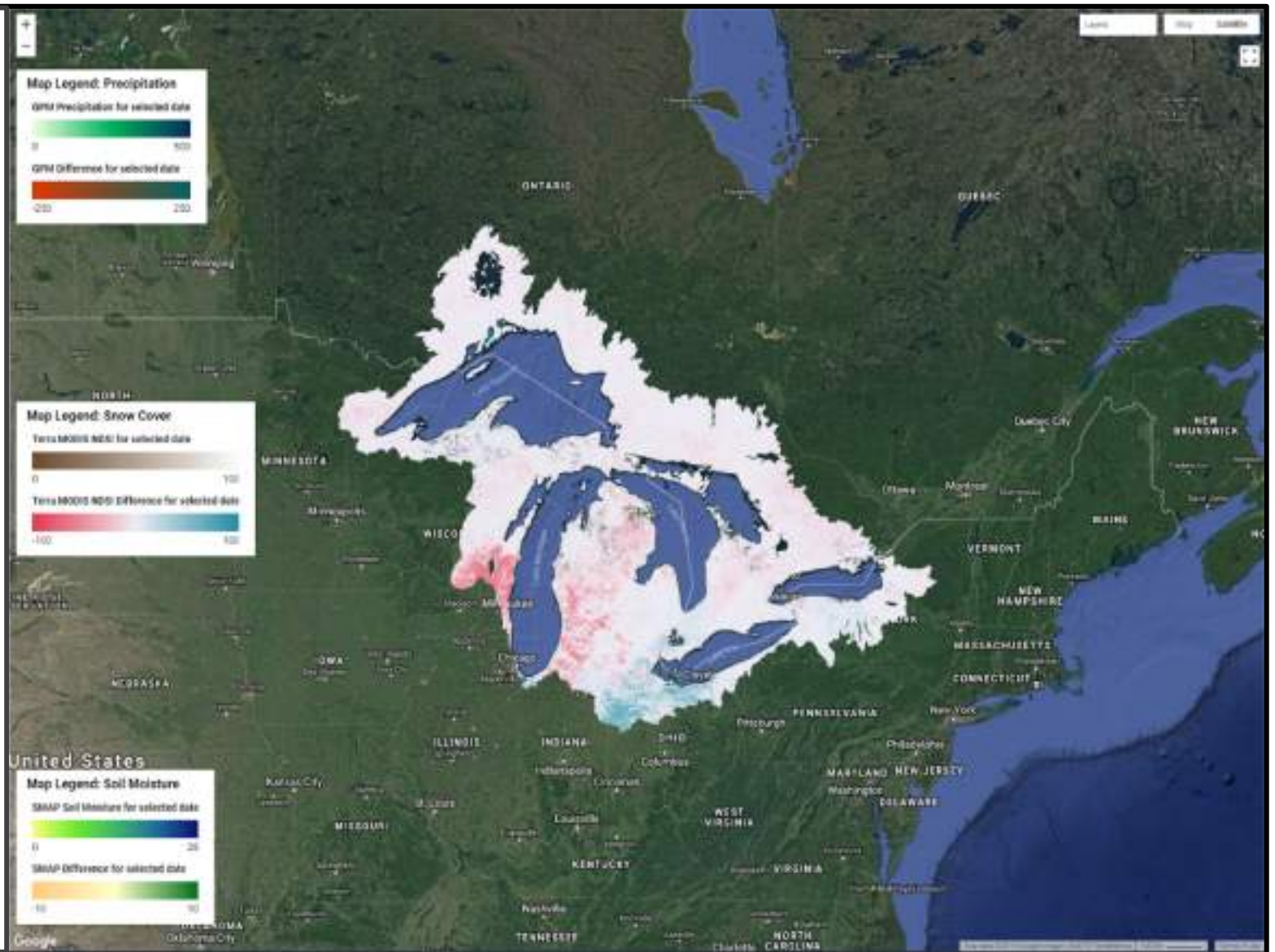
Great Lakes Basin

5. Display Map

Display Map

6. Export Data

Export Data



Watershed Conditions Tool

Visualized the variables of precipitation, snow cover, & soil moisture



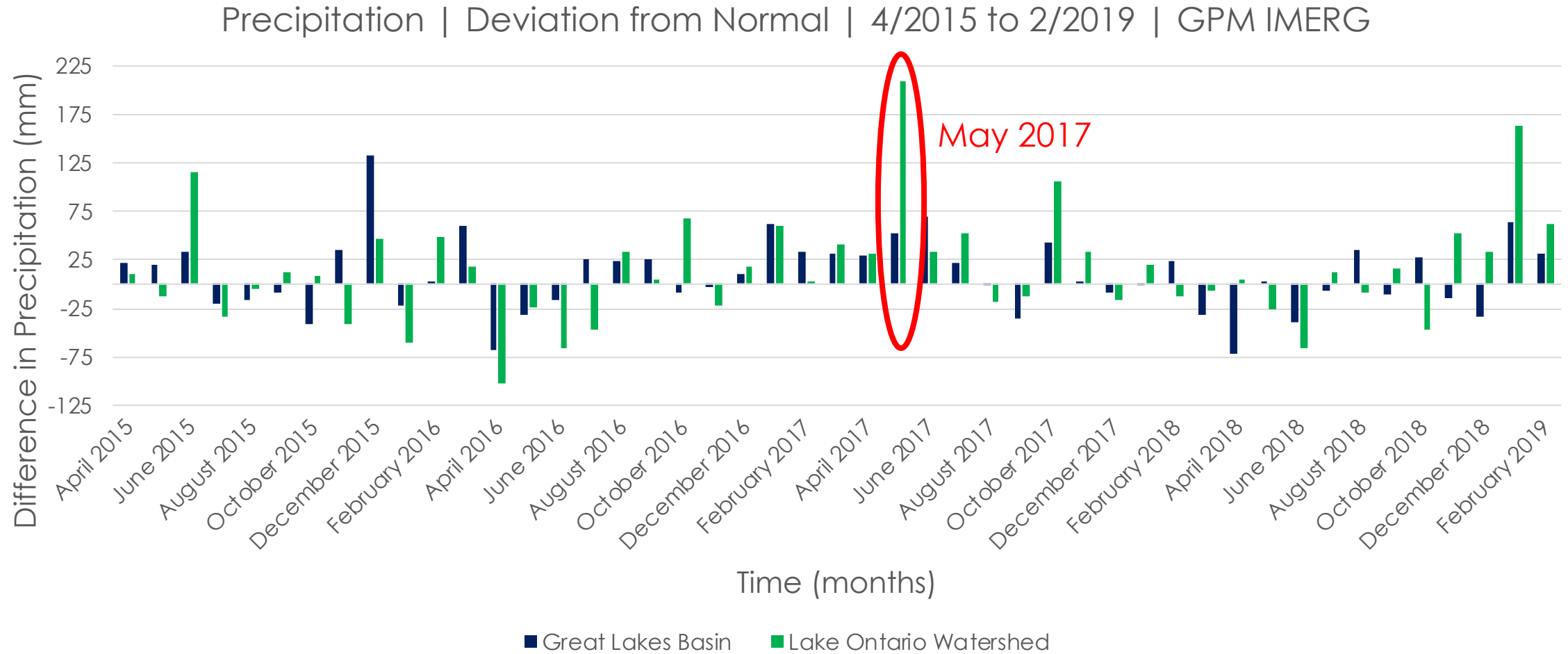
Snow cover for January 2018

Deviation from normal during flooding months



Snow cover deviation from normal for January 2018

Watershed Conditions Tool Output



ACKNOWLEDGEMENTS

DEVELOP

- ▶ Tom DeSantis and Alan Nusbaum, City of Niagara Falls
- ▶ Garrett Christie, Tyler Griffin, and Maria Yung, City of Toronto
- ▶ Teresa Chan, Samer Inchasi, Teresa Burgess-Ogilvie, Muneef Ahmad, & James Silburn, City of Mississauga
- ▶ Christine Zimmer, Credit Valley Conservation
- ▶ Victoria Kramkowski, Toronto & Region Conservation Authority
- ▶ Melissa Soline, Great Lakes and St. Lawrence Cities Initiative
- ▶ Dr. Scott Steinschneider, Cornell University
- ▶ Dr. Drew Gronewold, University of Michigan
- ▶ Tyler Hennessee , Isaac Gamoran, Meryl Kruskopf, Elizabeth Swanson, Christine Fleming, Celeste Gambino, Eric Deutsch, & Oyut Amarjargal, DEVELOP Team Members

Thank You!

National Aeronautics and
Space Administration



Zach Bengtsson, DEVELOP Center Lead
Zachary.Bengtsson@ssaihq.com

***To learn more about DEVELOP or
submit a project idea, please visit
our website!***

<http://develop.larc.nasa.gov>

