

**Titus Seilheimer**

Fisheries Specialist

Wisconsin Sea Grant

@DrFishSG

# Great Lakes Fisheries

**Now and into the future**

Great Lakes and St. Lawrence Cities Initiative webinar

November 18, 2021



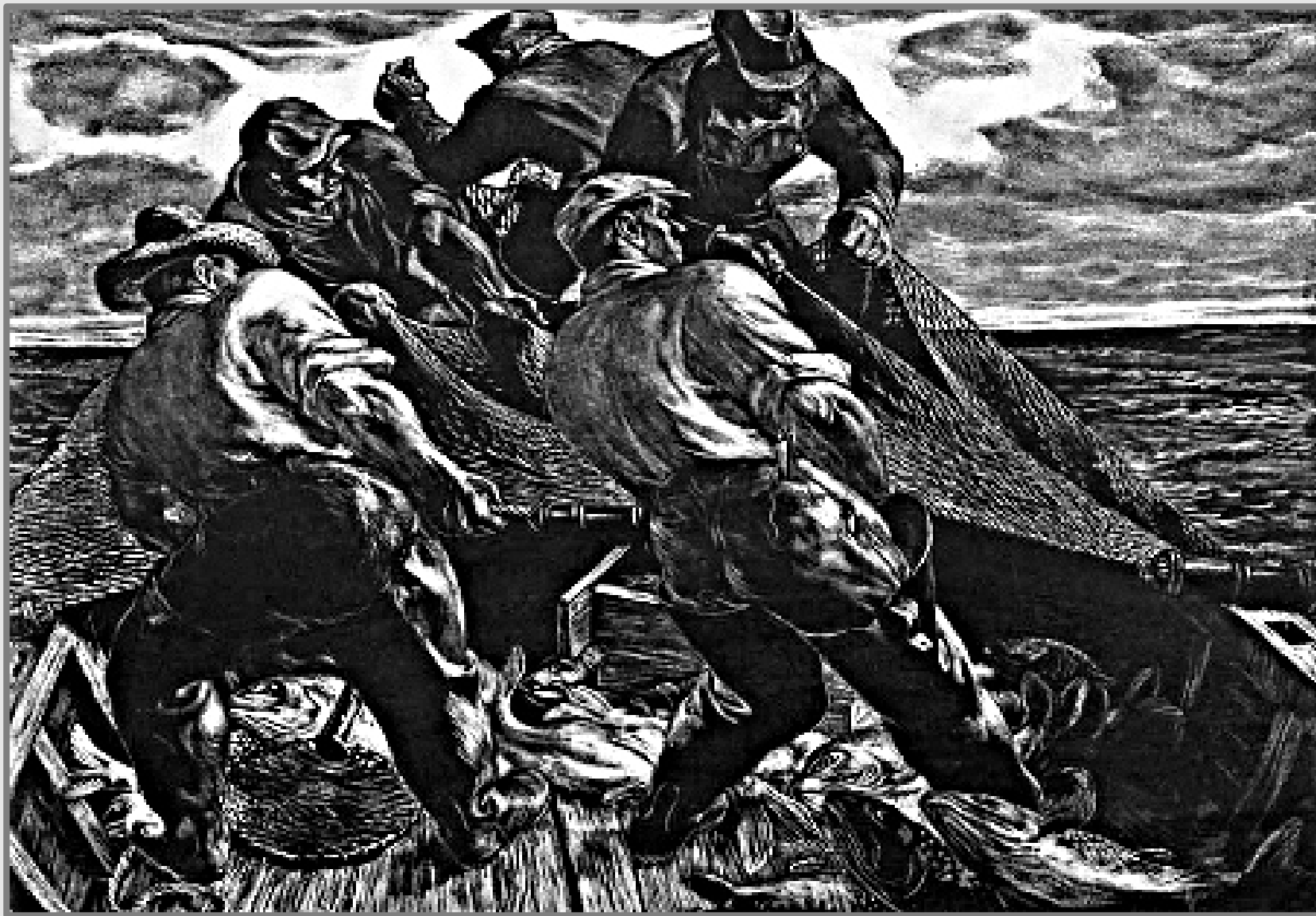








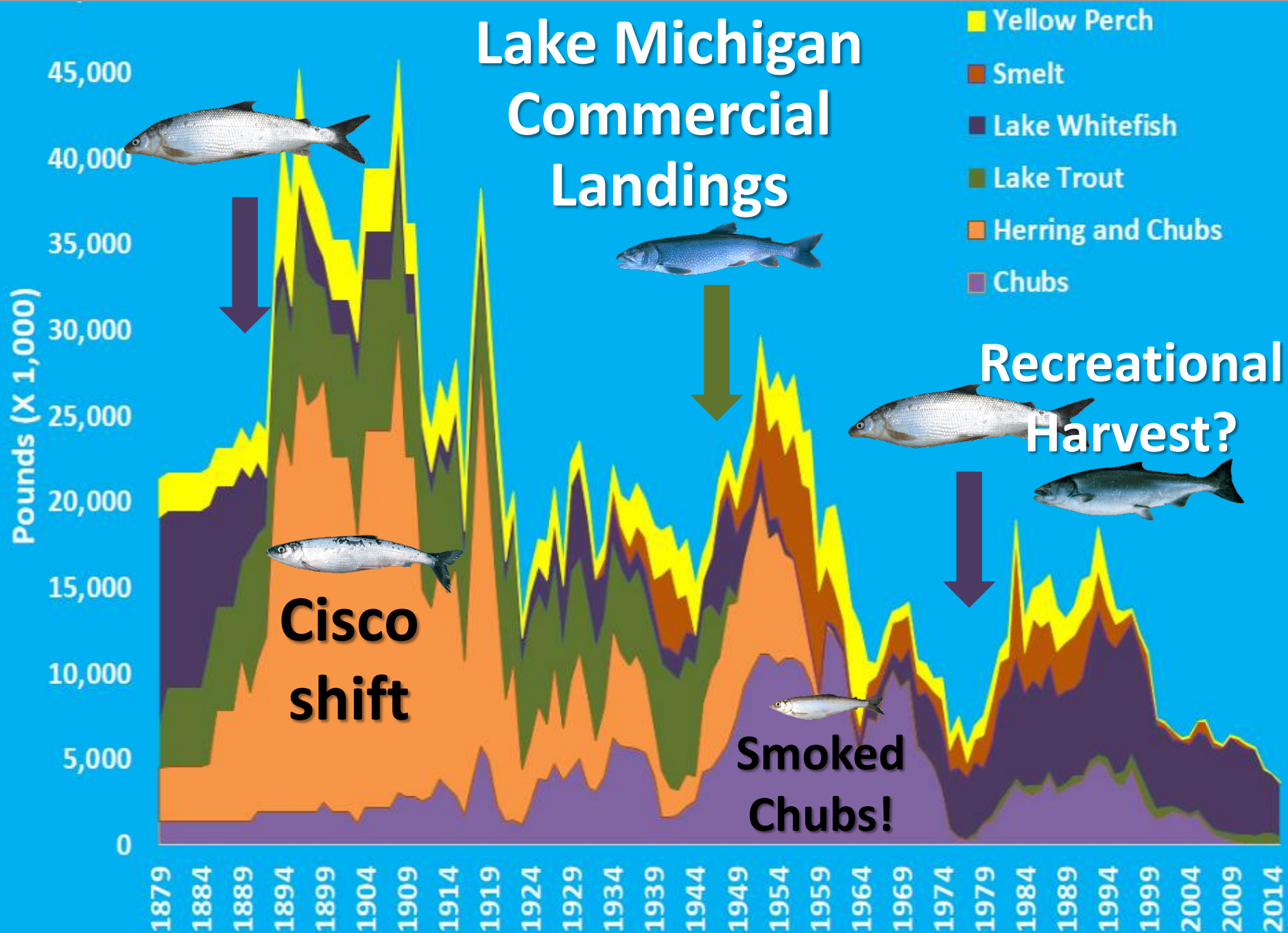




**Robert von Neumann**  
**Trapnet fishing on the Great Lakes**



# Lake Michigan Commercial Landings



# Great Lakes Today





# Tribal

Subsistence, commercial, recreational





Commercial





**Retail, processing, value-added**







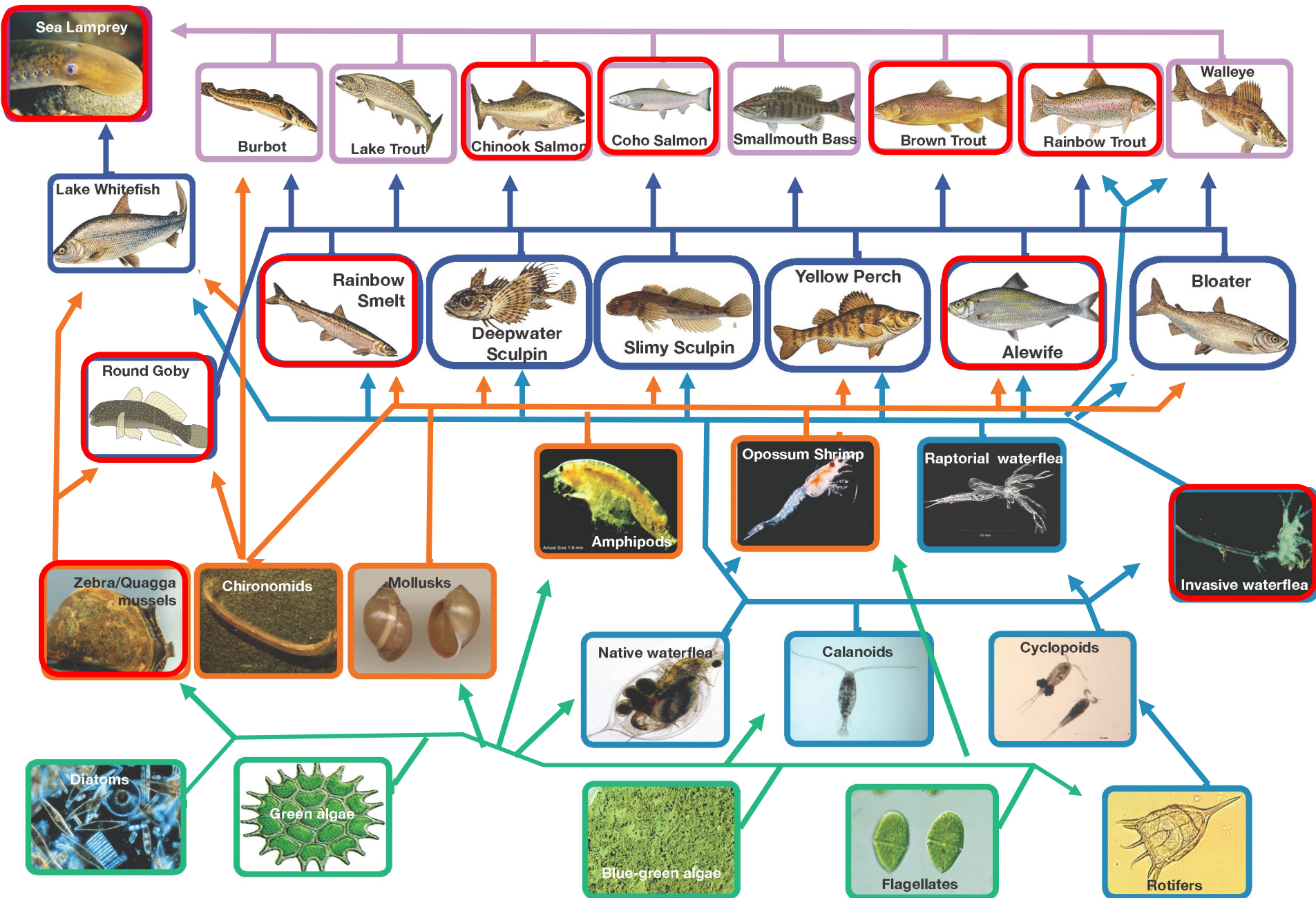
# Charter and Recreational





Shore, stream, pier







# Changed lakes, altered states





# Future Climate





# New Species



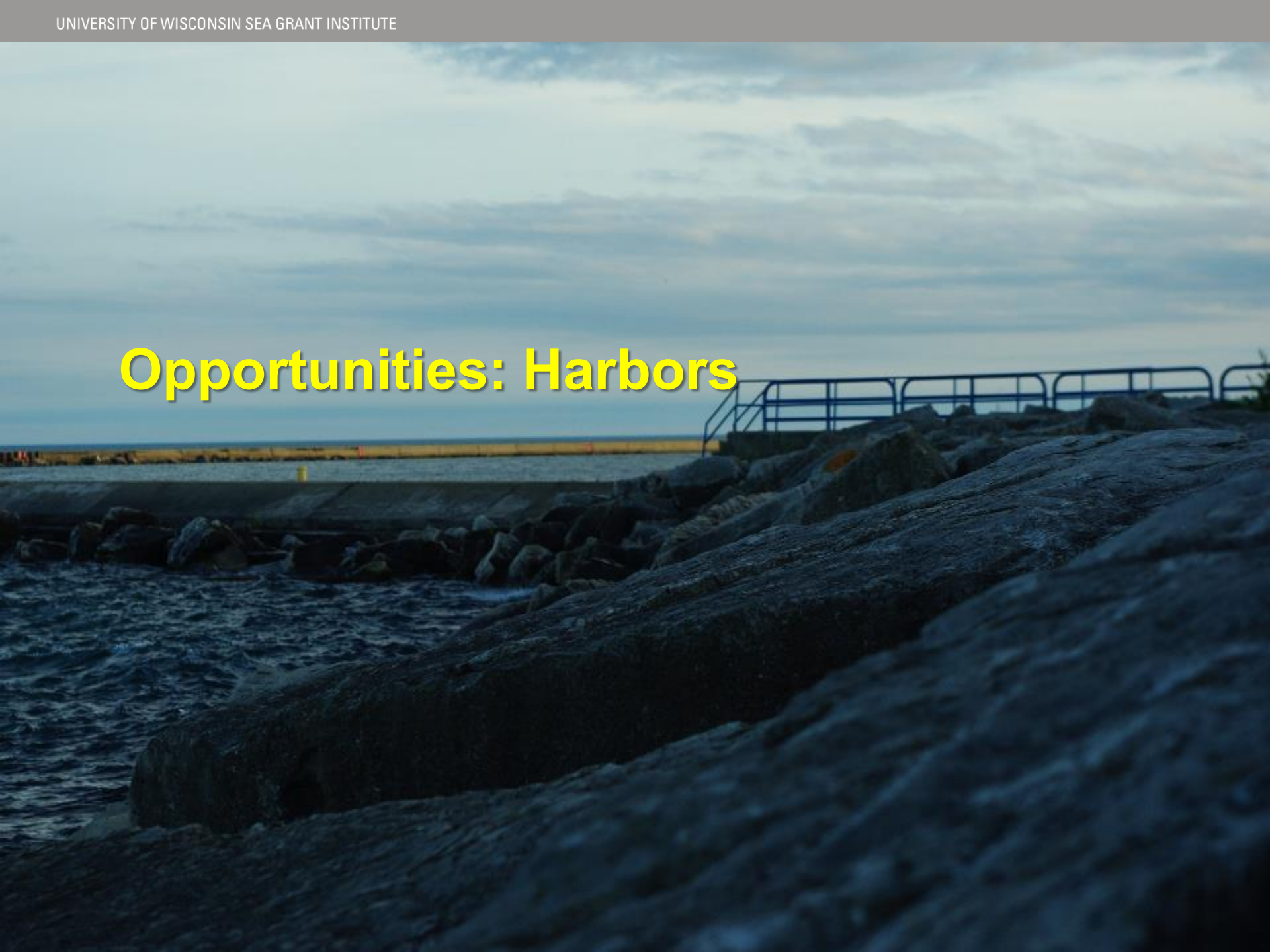


# Local actions, lakewide impacts





# Opportunities: Harbors





# HARBOR HABITAT Milwaukee & Wisconsin

The University of Wisconsin Sea Grant Institute is pleased to announce the Harbor Habitat Milwaukee & Wisconsin project. This project is a collaborative effort between the University of Wisconsin Sea Grant Institute, the Milwaukee Harbor Foundation, and the Milwaukee Harbor Foundation. The project is designed to improve the water quality and habitat of the Milwaukee Harbor and its surrounding areas. The project will include the construction of artificial reefs, the installation of water quality monitoring equipment, and the implementation of a series of educational and outreach programs. The project is expected to be completed by the end of 2015.

**Milwaukee Harbor**  
The Milwaukee Harbor is a large body of water located in the city of Milwaukee, Wisconsin. It is the largest of the five Great Lakes and is home to a variety of fish and wildlife. The harbor is also a major port for the city and is used for a variety of commercial and recreational activities. The harbor is surrounded by the city of Milwaukee and is an important part of the city's economy and culture.

**Harbor Habitat**  
The Harbor Habitat project is a collaborative effort between the University of Wisconsin Sea Grant Institute, the Milwaukee Harbor Foundation, and the Milwaukee Harbor Foundation. The project is designed to improve the water quality and habitat of the Milwaukee Harbor and its surrounding areas. The project will include the construction of artificial reefs, the installation of water quality monitoring equipment, and the implementation of a series of educational and outreach programs. The project is expected to be completed by the end of 2015.

**Artificial Reefs**  
The project will include the construction of artificial reefs in the Milwaukee Harbor. These reefs are designed to provide a habitat for fish and other marine life. They are also designed to improve the water quality of the harbor. The reefs will be constructed from a variety of materials, including concrete, steel, and plastic. They will be placed in strategic locations throughout the harbor.

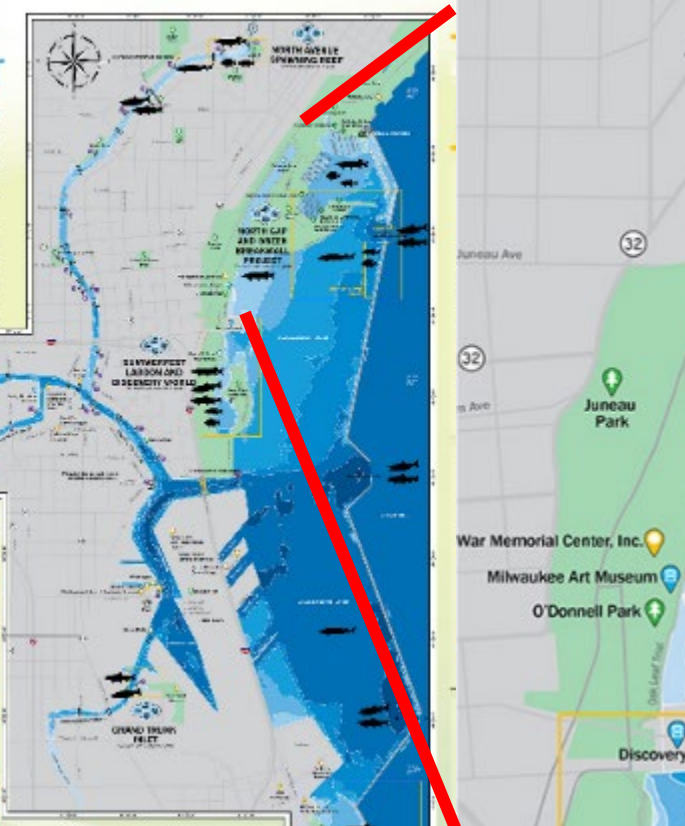
**Water Quality Monitoring**  
The project will also include the installation of water quality monitoring equipment in the Milwaukee Harbor. This equipment will be used to monitor the water quality of the harbor and to identify any problems that may be affecting the water quality. The data collected from this equipment will be used to inform the project's management and to help make decisions about the future of the harbor.

**Educational and Outreach Programs**  
The project will also include a series of educational and outreach programs. These programs are designed to educate the public about the importance of the Milwaukee Harbor and the need for the Harbor Habitat project. They will include a variety of activities, including lectures, workshops, and field trips. The programs will be held at various locations throughout the city of Milwaukee.

**Project Timeline**  
The project is expected to be completed by the end of 2015. The timeline for the project is as follows: Construction of artificial reefs: 2013-2014; Installation of water quality monitoring equipment: 2014-2015; Implementation of educational and outreach programs: 2013-2015.

**Project Budget**  
The project has a total budget of \$1,000,000. The budget is divided into three main categories: Construction of artificial reefs: \$500,000; Installation of water quality monitoring equipment: \$200,000; Implementation of educational and outreach programs: \$300,000.

**Project Contacts**  
For more information about the Harbor Habitat Milwaukee & Wisconsin project, please contact the University of Wisconsin Sea Grant Institute at (608) 262-3200 or the Milwaukee Harbor Foundation at (414) 224-1234.



43° 02' 00"

43° 02' 30"

43° 02' 15"







# Creating a more fish friendly stream mouth





# Opportunities: water quality





## Rain Gardens





# Bioswales





# Opportunities: Access and accessibility





# Working waterfronts





# Embracing habitat in coastal protection





**There are threats but also opportunities to connect people with the Great Lakes.**







**Titus Seilheimer**  
Fisheries Specialist  
Wisconsin Sea Grant  
920-683-4697  
[tseilheimer@aqua.wisc.edu](mailto:tseilheimer@aqua.wisc.edu)